



WeASSiST

**PROCESS OPTIMISATION
IN ONE MINUTE**

**DIGITAL.
CLOUD-BASED.
SCALABLE.**

WeASSIST

DO YOU ASK YOURSELF:

How can I keep a constant eye on my production and logistics processes and also continuously improve them?

WE HAVE THE ANSWER:

With WERMA **WeASSIST**, your digital solution for monitoring and process optimisation. Provides real-time observation of your whole system.

WeASSIST: **SIMPLY POWERFUL!**

Full transparency

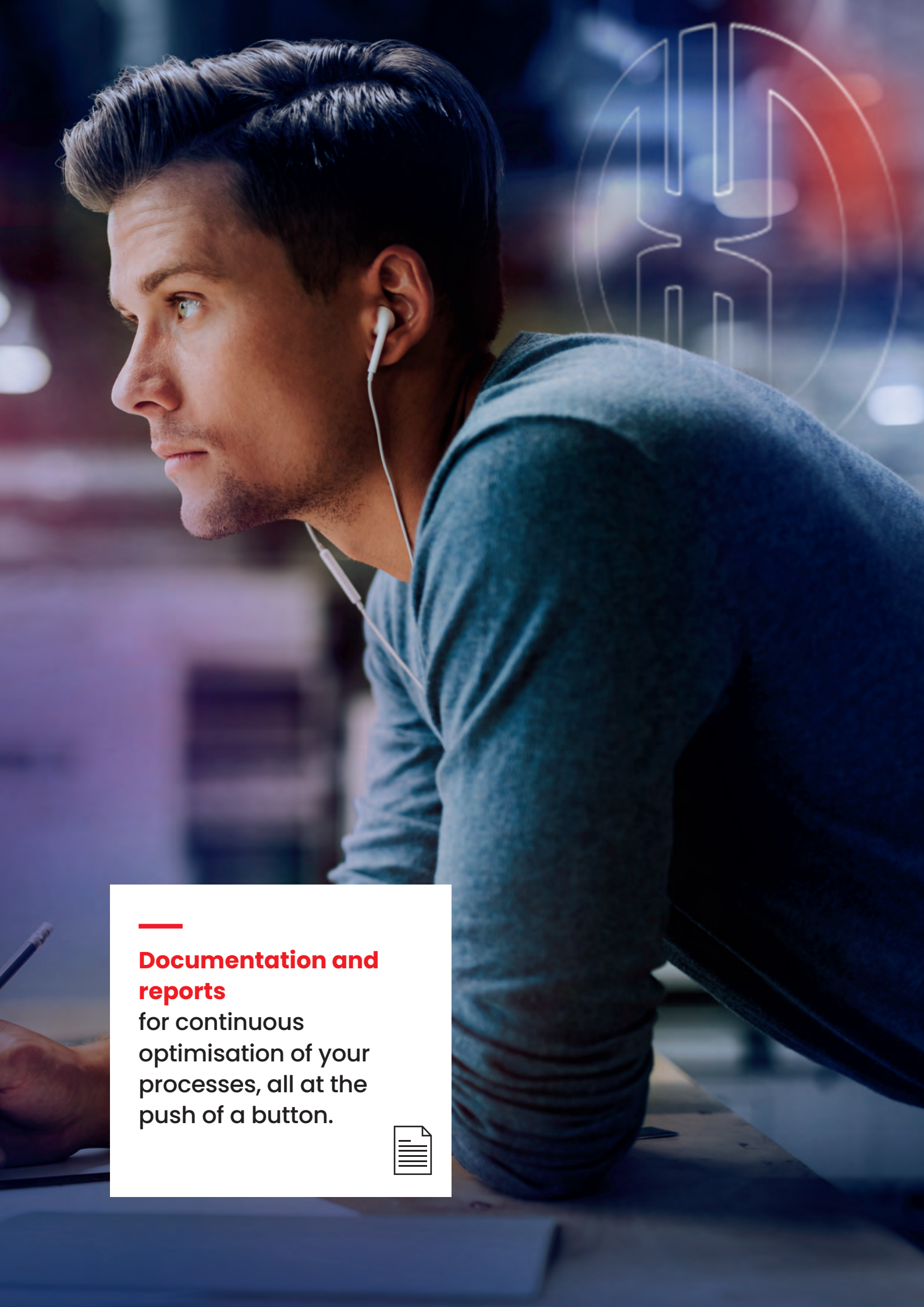
across all workstations,
machine states and
systems



Real-time overview

of order status,
material bottlenecks
and malfunctions for
fast and specific
troubleshooting.





Documentation and reports

for continuous optimisation of your processes, all at the push of a button.



WeASSIST. PLUG & PLAY UPGRADE



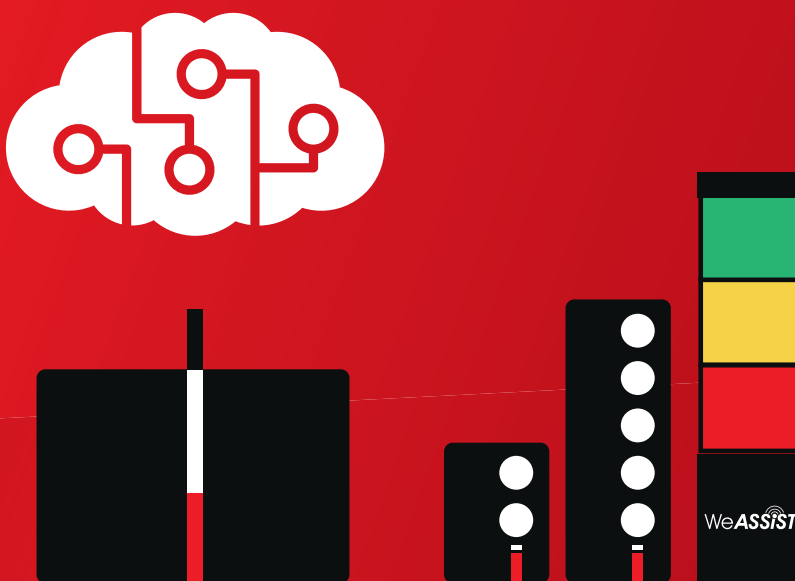
THE NEW GENERATION: HARDWARE AND SOFTWARE FOR PROCESS OPTIMISATION

WERMA **WeASSIST** is the cross-industry cloud solution for comprehensive monitoring and continuous optimisation of your production processes. Keep an eye on your business at all times – digitally and in real time. It helps you to identify problems before they arise. And to improve even more little by little. This is good for your business, good for your employees and good for your customers.

WERMA **WeASSIST** turns networking into an advantage and makes Industry 4.0 a reality.

Digital. Cloud-based. Scalable.

CLOUD SERVICES



WeASSIST LETS YOU KEEP AN EYE ON YOUR BUSINESS – AT ALL TIMES

WeASSIST is the innovative **plug & play solution** for comprehensive and continuous **monitoring of your production and logistics processes** - cloud-based, easy to install, quick to retrofit and highly scalable. This makes WERMA **WeASSIST** the ideal solution for all enterprises that want to ensure full transparency in their entire value chain.

All relevant data is clearly displayed regardless of the source (manufacturer, type and age of machines or manual workstations). Unlike complex MDC/MES systems or IoT solutions, **WeASSIST** makes all potential optimisations easily visible and evaluable in real time and from anywhere.





MATERIAL FLOW



JOB COMPLETE



EFFICIENCY



QUALITY



SAFETY



OVERVIEW



WHAT DOES PROCESS OPTIMISATION IN ONE MINUTE MEAN?

Simply simple.

Install, configure and get started in just one minute.

REASON 01

The robust standard solution.

Ready in one minute with individual dashboards.

REASON 02

Hardware & software from a single source.

Ready in one minute as an out-of-the-box solution.

REASON 03

The retrofit solution.

Integrate into existing structures in one minute.

REASON 04

VIDEO



PROCESS OPTIMISATION IN ONE MINUTE

Digital. Cloud-based.
Scalable



**Any time, anywhere,
using any device:**

Get an overview in one
minute using this cloud
solution.

REASON 05

ONE MINUTE ONE BOX



**ORDER OUR
StarterKIT TODAY
IN LESS THAN
ONE MINUTE**

CONTENTS:

- 1 Gateway
- 1 signal tower plus transceiver and AndonCONTROL for manual testing
- 1 terminal element for integration into machines

Simply scan the QR code and order:





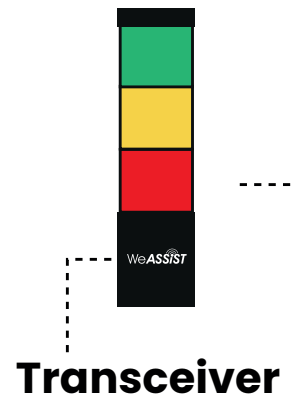
**WeASSIST INTEGRATES
SEAMLESSLY INTO YOUR
SYSTEM & YOUR WORKFLOW**

WeASSIST – GET STARTED IN A FLASH

PROCESS OPTIMISATION IN ONE MINUTE:

1. Integrate hardware into workstations and machines
2. Enable software access
3. Set up hardware, software and dashboards; assign roles and users
4. Receive immediate production status reports and evaluations

WATCH THE FILM:



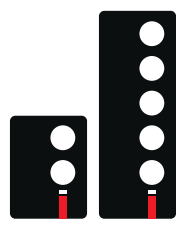
Transceivers and Andon boxes report the status of machines and workstations directly in the software via the gateway.



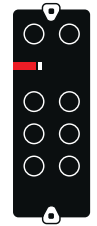
Gateway



Multiple Transceivers



Andon-Box



IO-Box

Problems are shown immediately – at any time and anywhere and no IT expertise is needed thanks to the cloud-based solution.

02

Analysis tools enable process improvement potential to be continuously identified – process optimisation has never been easier.

03



COSTS AT A GLANCE



**CALCULATE THE
COST BENEFIT OF
USING WEASSIST
NOW.**

Just scan the QR code and
calculate your benefit:





MATERIAL FLOW



JO



EFF



QUALITY



SAFETY



OVERVIEW

BEARBEITEN

Produktionsmonitor

Production



Gerät: Hermle C22

19.10.21, 13:50



Gerät: Hermle C22

Dauer

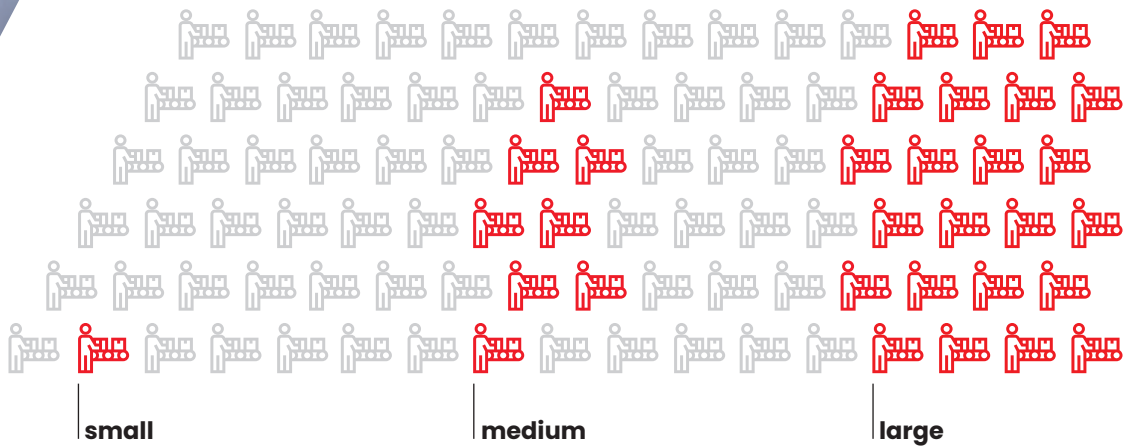


Aktuelle Vorfälle

- Material is missing
Arburg 630 A/H
vor 22 Minuten
menschlicher Fehler
- Machine stoped
Hermle C22
vor 2 Stunden
Werkzeug abgenutzt
- Production stop
Hermle C22
vor einem Tag
Stromausfall

Hermle C22

Die Säule ist nicht in operation
19.10.2021, 13:53:42



EVERY BIG SOLUTION CAN START OFF SMALL.

FLEXIBLE, INDIVIDUAL AND EXPANDABLE – OR PUT SIMPLY: **THE PERFECT FIT.**

WeASSIST gives you all the options you need to optimise your processes precisely and individually. Want to start with a small, medium or large system? Do you want to rescale quickly and flexibly? No problem!

Use **WeASSIST** to take the first step towards continuous optimisation of your processes.

Choose your **WeASSIST solution** from our scalable modular system, perfectly adapted to your specific manufacturing or shipping infrastructure.

YOUR APPLICATIONS OUR SOLUTIONS

01 MANUAL WORKSTATIONS

In these times of increasing flexibility, manual workstations are becoming ever more important. This makes efficient call-for-action systems all the more crucial. **WeASSIST** keeps track of everything and guarantees smooth workflows from material supply to the finished product.



02 MACHINES & EQUIPMENT

Are we talking about output and performance? Then let's also talk about making processes transparent and optimising them continuously.

WeASSIST is your digital companion – cloud-based, expandable, scalable.



03 SHIPPING LOGISTICS

The global flow of goods has increased enormously. Efficient shipping logistics not only depends on speed, but also on clarity. **WeASSIST** is the perfect out-of-the-box solution.



„Our first test runs using **WeASSIST were so promising that we will also be using the solution for our next **SMD assembly line, which will be up and running in a few weeks time.**“**

Michel Wucher, SMD Production Manager at VEGA Grieshaber KG

ANY FURTHER QUESTIONS? WE'RE HERE TO HELP!

INDIVIDUAL QUOTE

Umpteen customers already rely on WERMA solutions – we make your production and logistics processes better and more efficient. We would be happy to advise you individually and in person.

Your personal contact for Switzerland, France, Italy, Benelux, UK, USA or China.



Your contact for Germany and all other countries.



WERMA EVENTS

Why not visit a WERMA live event or find out more at one of our webinars. You can find an overview of all appointments here.



SUPPORT

If you have any questions about the installation and software, our support team will be happy to help.

SUPPORT@WERMA.COM

SUPPORT-HOTLINE: +49(0) 7424 9557-222

WERMA Signaltechnik GmbH + Co. KG

Dürbheimer Str. 15
D-78604 Rietheim-Weilheim
Phone + 49 74 24 95 57- 0 | Fax + 49 74 24 95 57- 44
www.werma.com | info@werma.com

WERMA Signaltechnik

Niederlassung Neuhausen am Rhf.
Rheingoldstrasse 50
8212 Neuhausen am Rheinfall
Switzerland
Phone + 41 52 674 00 60 | Fax + 41 52 674 00 66
www.werma.com | info@werma.ch

WERMA Italia S.r.l.

Via dell'Artigianato 42
29122 Piacenza
Italy
Phone +39 05 23 04 45 44
www.werma.com | info@werma.it

WERMA SARL

56, Rue Colière
69780 Mions
France
Phone + 33 4 72 22 37 37
www.werma.com | info@werma.fr

WERMA BENELUX

Poortakkerstraat 41C
9051 Sint-Denijs-Westrem
Belgium
Phone + 32 9 220 31 11
www.werma.com | info@werma-benelux.com

WERMA (UK) Ltd.

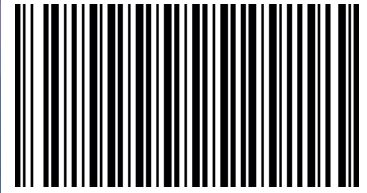
11 Regent Park
37 Booth Drive
Park Farm Industrial Estate
Wellingborough NN8 6GR
Great Britain
Phone + 44 15 36 48 69 30 | Fax + 44 15 36 51 48 10
www.werma.com | uksales@werma.co.uk

WERMA USA Inc.

1266 Oakbrook Drive, Suite A
Norcross, GA 30093 USA
Phone +1 (470) 361-0600
www.werma.com | us-info@werma.com

WERMA (Shanghai) Co., Ltd.

Building 8, No. 85, Mingnan Road, Songjiang,
Shanghai, P. R. C
201613
Phone +86 (0) 21 /5774-0022 | Fax +86 (0) 21 /5774-6601
www.werma.com.cn | info@werma.com.cn



03/22 · 540 000 058 · EN