

Modular Signal Tower with USB Terminal Element



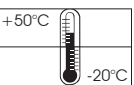
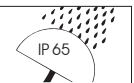
Technical Specifications/Order Specifications

USB Terminal Element for KombiSIGN 71 + 72

Dimensions (Ø x Height)	70 mm x 36 mm
Fixing	Tube mounting
Power supply	Via USB (5 V DC)
Voltage	24 V DC
Current carrying cap. Σ I _{max}	90 mA at 24 V
Life duration	Up to 50,000 hrs
Terminal Element	640 840 00
Pre-configured signal tower (green, yellow, red)	649 000 05

Assembly

Demo software, driver, handbook and USB connection cable (1.8 m long), System requirements see handbook



Accessories



- Base with integrated tube Ø 25 mm, plastic
- Base for tube, Ø 25 mm, metal
- Tube Ø 25 mm, all anodised aluminium, 100, 250, 400, 600, 800, 1000 mm long
- KombiSIGN 71 (red, green, yellow, white, blue)***
- Permanent light element
- LED Permanent light element
- LED Permanent light element ultrabright
- Flashing light element (Xenon)
- LED Flashing light element
- LED EVS element
- LED Blinking light element
- LED Rotating light element
- LED Permanent light element multicolour
- KombiSIGN 72 (red, green, yellow, white, blue)***
- TwinLIGHT (Permanent/Blinking light)
- TwinFLASH (Flash/EVS)

*Order no. can be found at www.werma.com or in the catalogue.

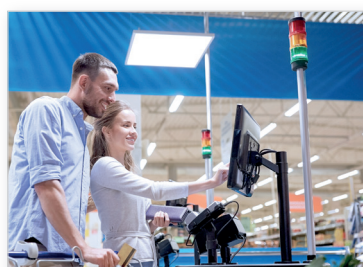
Benefits

- Direct triggering of signal tower elements via USB Interface
- Actuation via DLL (Dynamic Link Library) or VCP (Virtual-COM-Port)
- Simple integration into any customer-specific software
- No additional power supply or hardware necessary
- Up to five signal towers with a maximum of five tiers each can be connected
- They can be directly connected and are ready for immediate use (plug and play)
- Maximum cable length 5m

Typical applications



Signal Tower in call centres

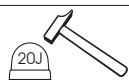
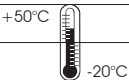


Automated check-out systems



Printer in the office or the manufacturing department

LED Beacon with USB Interface



Technical Specifications/Order Specifications

LED Beacon Multicolour (PG29)

Dimensions (Ø x Height)	75 mm x 66 mm (Protrusion from panel)
Fixing	Installation mounting for Ø 37 mm, Base and Wall mounting (accessories)
Power supply	Via USB
Colour options	More than 200,000 colours (RGB LED)
Voltage	5 V (USB-Connection)
Current consumption	≤ 500 mA
Life duration	Up to 50,000 hrs
Order no.	816 480 53

Assembly: Demo software, driver, handbook and USB connection cable included (1.8 m long), System requirements see handbook

Accessories



- Tube adaptor
- Base with integrated tube, Ø 25 mm, 110 mm long, plastic
- Base for tube mounting
- Base for base mounting
- Tube Ø 25 mm, all anodised aluminium, 100, 250, 400 mm long
- Anti-twist device
- Surface housing IP65 for 1, 2, 3 or 4 Installation Beacons

*Order no. can be found at www.verma.com or in the catalogue.

Benefits

- Direct triggering of LED beacon via USB Interface
- Actuation via DLL (Dynamic Link Library) or VCP (Virtual-COM-Port)
- Simple integration into any customer-specific software
- No additional power supply or hardware necessary
- They can be directly connected and are ready for immediate use (plug and play)
- Maximum cable length 5m
- A wide range of colours and light effects can be quickly and simply programmed by the customer and altered at any time.

Typical applications



LED Beacon in call centres



Inspection stations in the manufacturing department



Public access systems



WERMA Signaltechnik GmbH + Co. KG
 Dürbheimer Str. 15
 78604 Rietheim-Weilheim
www.verma.com