



**PLC**  
**+HMI**  
ALL IN ONE™

**Powerful Software**  
**Outstanding Support**  
**Complete Range of PLCs**

**VISION**  
**SAMBA**  
**JAZZ**



## Powerful Software

Single, intuitive, feature-rich programming environment & utilities suite

Unitronics provides a powerful solution; our software is more than a match for any requirement. Hardware configuration, HMI design and communications are all programmed in an single, intuitive software environment, which includes a extensive utilities suite with DataExport, Remote Access and more. This all-in-one approach reduces the time and effort needed to program a unit. Not only is our software user-friendly, all of Unitronics software and utilities are provided at no extra cost.

## Outstanding Support

Expert support without fees or tiers

**“The support, both via telephone, email and the Unitronics forum, is among the best in the industry”** says Jose Padro, President of Alpha Systems, Inc. Unitronics offers best-of-breed technical support to every user without added fees, tiers, or hoops to jump through. Every question we receive is answered by an experienced member of our support team. The same team of experts is available at every step of the project.



# Complete Range of PLCs

A range of product lines to match your exact requirements

With 25 years of experience in automation, Unitronics has established several PLC lines with options to meet a diverse range of requirements. Our R&D strategy is to stay close to the market; we listen to our customer's current needs and future plans and develop new solutions accordingly. This strategy enables us to offer simple tried-and-true solutions alongside cutting edge innovations.

**PLC**  
**+ HMI**  
**ALL IN ONE™**

**Unitronics** designs, manufactures, and markets quality PLCs for the global market.

Easy to use, efficient, and affordable, our products have been automating processes, systems, and stand-alone applications since 1989.

We maintain more than 160 distributors in over 55 countries around the globe, enabling our customers to purchase our products with local marketing support.

Unitronics' field-proven PLCs automate hundreds of thousands of installations in diverse fields: petrochemical, automotive, food processing, plastic & textile, energy & environment, water & waste water management - anywhere automated processes are required.

Our clients include:

Coca-Cola, General Motors, Michelin, Tupperware, Intel, Bayer, Colgate-Palmolive, Land Instruments, Mercedes-Benz, Agfa, Tyson Foods, Pirelli, Fiat, Samsonite.

Download Unitronics' App:



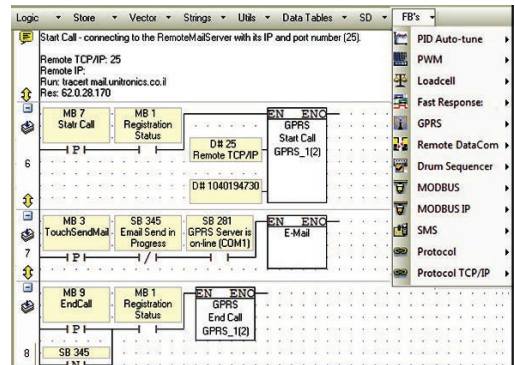
<b>Table of Contents</b>	<b>Page</b>
Integrated Programming Environment .....	6
Utilities .....	7
Vision 1210 / 1040 .....	8
Vision 700 .....	10
Vision 570J / 570 / 560 .....	12
Vision 430 .....	14
Vision 350J / 350 .....	16
Vision 130J / 130 .....	18
Vision 120 .....	20
Vision 200 .....	21
SAMBA .....	22
JAZZ .....	24
M91 .....	26
I/O Expansion Modules .....	28
Snap-in I/O Modules .....	29
Network Configuration .....	30

# Powerful software – included with your All-in-One package

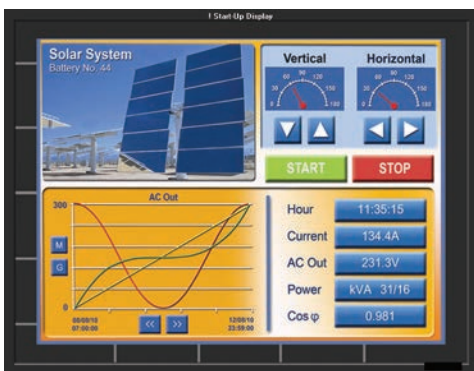
A single, intuitive environment for all of your application needs



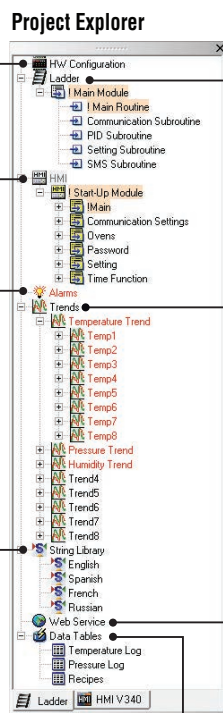
**Hardware Configuration**  
Intuitive set up: controller, I/Os, and COM channels



**Ladder Programming**  
Rapidly drag & drop elements and Function Blocks



**HMI Application**  
Create beautiful HMI displays – includes rich image library



**Trend Graphs**  
Display dynamic values in real-time

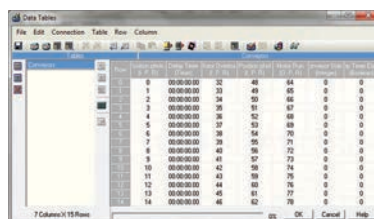


**Alarms: Built-in Screens**  
Effectively alert staff via Alarm screens



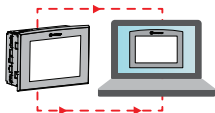

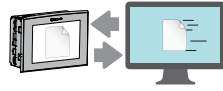




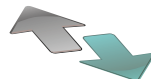


**Web Server**  
Display and edit application values via browser

**Languages - String Library**  
Instantly switch HMI language via screen touch



**Data Tables**  
Create logs, import/export data, implement recipes

## Smart Utilities – Remote Access, Efficient Data Management and more

Utility Name	Function	Key Features	Targeted Users
<b>Remote Access</b> 	View and control a PLC directly from PC, via local or remote connection	<ul style="list-style-type: none"> <li>View an HMI panel; use the PC keyboard + mouse to run the HMI application</li> <li>Operand and Data Table values: view values during runtime, import and export values to/from Excel/.csv files</li> </ul>	<ul style="list-style-type: none"> <li>Operators requiring Remote Access</li> <li>System integrators: remote debugging, troubleshooting, fault-finding</li> </ul>
<b>Remote Operator</b> 	Simultaneously view and operate the HMI panels of multiple PLCs in multiple locations	<ul style="list-style-type: none"> <li>Easily place HMI panels side-by-side to monitor distributed systems, or applications in several locations</li> <li>Run the HMI applications via PC keyboard + mouse</li> </ul>	<ul style="list-style-type: none"> <li>Control room operators</li> <li>Installation Managers</li> </ul>
<b>DataXport</b> 	Create Data Logs from Data Tables and operand values in PLCs	<ul style="list-style-type: none"> <li>Harvest data from multiple PLCs - on demand or according to time/date</li> <li>Export the data to Excel/CSV files</li> <li>Automatically email files</li> </ul>	<ul style="list-style-type: none"> <li>Data analysts</li> <li>Plant managers</li> <li>Process engineers</li> </ul>
<b>UniDownload Designer</b> 	Create compressed VisiLogic / U90Ladder applications (.udc files) for secure installation in local or remote PLCs	<ul style="list-style-type: none"> <li>Prevent end-users from uploading and opening the application</li> <li>Include an OS to be installed at download Set a Download channel, restrict end-user actions after installation and more</li> </ul>	<ul style="list-style-type: none"> <li>OEMs / System Integrators can: <ul style="list-style-type: none"> <li>Protect source code.</li> <li>Enable customers to install an application without using VisiLogic or U90Ladder</li> </ul> </li> </ul>
<b>Download Manager &amp; UniDownloader</b> 	Securely install .udc applications in local or remote PLCs	<ul style="list-style-type: none"> <li>Download Manager: installs the same application in multiple PLCs</li> <li>UniDownloader: installs an application in a single PLC</li> </ul>	<ul style="list-style-type: none"> <li>OEMs / System Integrators in installations with high security requirements</li> </ul>
<b>SD Card Suite</b> 	Remotely access and manage SD cards and their data	<ul style="list-style-type: none"> <li>Browse a remote PLC's SD card.</li> <li>Read/write data, including Data Table files View SD card contents - Trends, logs, alarm history, data tables - export to Excel</li> </ul>	<ul style="list-style-type: none"> <li>Data analysts</li> <li>Plant managers</li> <li>Process engineers</li> </ul>
<b>UniVision Licensing</b> 	Safeguard your PLC application security	<ul style="list-style-type: none"> <li>Embeds unique licenses in the PLC, which enables application to run only on a licensed PLC</li> <li>Option to activate or deactivate different sections of your application</li> <li>Prevents theft of applications</li> </ul>	<ul style="list-style-type: none"> <li>System integrators</li> <li>OEMs</li> </ul>
<b>UniOPC Server</b> 	Exchange data between Unitronics PLCs and OPC-supported software	<ul style="list-style-type: none"> <li>Create channel to connect PLCs to SCADA systems, such as plant control rooms</li> <li>Compliant with the OPC foundation standards</li> </ul>	Control room operators
<b>UniDDE</b> 	Exchange data with Windows based applications	Enables data exchange between Unitronics PLC's and software that supports Microsoft's Dynamic Data Exchange protocols, like Excel.	Control rooms operators
<b>Programming tools for developers</b> 	Easily implement communication between PLC & PC applications	Using ActiveX & .NET communication drivers	Developers

# VISION 1210™/1040™

Advanced PLC from the back-big & beautiful color touchscreen from the front, 12.1" /10.4". Snap-in I/Os for an All-in-One; expand up to 1000 I/Os

## Features:

### HMI

- Up to 1024 user-designed screens
- 500 images per application
- HMI graphs - color-code Trends
- Built-in alarm screens
- Text String Library - easy localization
- Memory and communication monitoring via HMI - No PC needed

### PLC

- I/O options include high-speed, temperature & weight measurement
- Auto-tune PID, up to 24 independent loops
- Recipe programs and datalogging via Data Tables
- Micro SD card - log, backup, clone & more
- Date & Time-based control

### Communication

- TCP/IP via Ethernet
- Web server: Use built-in HTML pages, or design complex pages to view and edit PLC data via the Internet
- Send e-mail function
- SMS messaging
- GPRS/GSM
- Remote Access utilities
- MODBUS protocol support
- BACnet, M-bus – via 3rd-party converter
- CANbus: CANopen, UniCAN, SAE J1939 and more
- DF1 Slave
- SNMP agent V1
- FB Protocol Utility: enables serial or TCP/IP communications with 3rd-party device; barcode readers, frequency converters, etc
- Ports: supplied with 2 isolated RS232/RS485, 1 CANbus, 1 USB programming port; 1 port may be added for serial/Ethernet



**V1210**  
Flat Panel



**V1040**  
Classic Panel



“ I’ve not yet encountered a job that a Unitronics PLC was unable to cover. ”

Timothy Moulder,  
Engineer at Black & Decker

	V1040	V1210
Article Number	V1040-T20B	V1210-T20BJ
<b>I/O Options</b>		
Snap-in I/O Modules	Plug these modules directly into the back of the Vision unit to create a self-contained PLC with up to 62 I/Os. Inputs may include Digital, Analog and Temperature Measurement. Outputs may include Transistor, Relay or Analog (sold separately).	
I/O Expansion	Local or Remote I/Os may be added via expansion port or via CANbus. Expand up to 1000 I/Os.	
<b>Program</b>		
Application Memory	Application Logic: 2MB • Images: 32MB • Fonts: 1MB	
Scan Time	9µsec per 1K of typical application	
Memory Operands	8192 coils, 4096 registers, 512 long integers (32 bit), 256 double words (32 bit unsigned), 64 floats, 384 timers (32 bit), 32 counters Additional non-retainable operands: 1024 X-bits, 512 X-integers, 256 X-long integers, 64 X-double words	
Data Tables	120K dynamic RAM data (recipe parameters, datalogs, etc.), up to 256K fixed data	
SD Card (Micro)	Store datalogs, Alarm History, Data Tables, Trend data, export to Excel • Back up Ladder, HMI & OS, clone PLCs	
USB	1 USB programming port (Mini-B)	
Enhanced Features	Trends: graph any value and display on HMI • Built-in Alarm management system • String Library: instantly switch HMI language	
<b>Operator Panel</b>		
Type	TFT LCD	
Display Backlight Illumination	White LED	
Colors	65,536 colors, 16-bit resolution • Brightness - Adjustable via touchscreen or software	
Display Resolution & Size	800 x 600 pixels (SVGA), 10.4"	800 x 600 pixels (SVGA), 12.1"
Touchscreen	Resistive, Analog	
Keys	9 programmable function keys	Virtual Keyboard
<b>General</b>		
Power Supply	12/24VDC	
Battery	7 years typical at 25°C, battery back-up for all memory sections and RTC	
Clock	Real-time clock functions (date and time)	
Environment	IP65/NEMA4X (when panel mounted)	IP66/IP65/NEMA4X (when panel mounted)
Standard	CE, UL Many of our products are also UL Class 1 Div 2 and GOST certified - please contact Unitronics	

# VISION 700™

Advanced PLC from the back - big & beautiful color 7" touchscreen from the front. Snap-in I/Os for an All-in-One; expand up to 1000 I/Os

Vision700™ has Ethernet port onboard, that supports 8 sockets, enabling to communicate with 8 devices simultaneously.

## Features:

### HMI

- Up to 1024 user-designed screens
- 500 images per application
- HMI graphs - color-code Trends
- Built-in alarm screens
- Text String Library - easy localization
- Memory and communication monitoring via HMI - No PC needed

### PLC

- I/O options include high-speed, temperature & weight measurement
- Auto-tune PID, up to 24 independent loops
- Recipe programs and datalogging via Data Tables
- SD card - log, backup, clone & more
- Date & Time-based control

### Communication

- TCP/IP via Ethernet
- Web server: Use built-in HTML pages, or design complex pages to view and edit PLC data via the Internet
- Send e-mail function
- SMS messaging
- GPRS/GSM
- Remote Access utilities
- MODBUS protocol support
- BACnet, M-bus – via 3rd-party converter
- CANbus: CANopen, UniCAN, SAE J1939, and more
- DF1 Slave
- SNMP Agent V1
- FB Protocol Utility: enables serial or TCP/IP communications with 3<sup>rd</sup>-party device; barcode readers, frequency converters, etc
- Ports: supplied with mini-USB programming port , 1 RS232/RS485 and 1 Ethernet port. 1 ports may be added: 1 Serial/Ethernet/Profibus and 1 CANbus



V700

“ Reliability, ease of use, connectivity and competitive prices are Unitronics' main strengths ”

CE/UL

Mr. Andrea Della Bosca,  
EV srl

	<h1>V700</h1>
<b>Article Number</b>	<b>V700-T20BJ</b>
<b>I/O Options</b>	
Snap-in I/O Modules	Plug these modules directly into the back of the Vision unit to create a self-contained PLC with up to 62 I/Os. Inputs may include Digital, Analog, and Temperature measurement. Outputs may include Transistor, Relay, or Analog. (sold separately)
I/O Expansion	Local or Remote I/Os may be added via expansion port or via CANbus
<b>Program</b>	
Application Memory	Application Logic: 2MB • Images: 60MB • Fonts: 1MB
Scan Time	9µsec per 1K of typical application
Memory Operands	8192 coils, 4096 registers, 512 long integers (32-bit), 256 double words (32-bit unsigned), 64 floats, 384 timers (32-bit), 32 counters. Additional non-retainable operands: 1024 X-bits, 512 X-integers, 256 X-long integers, 64 X-double words
Data Tables	120K dynamic RAM data (recipe parameters, datalogs, etc.), up to 256K fixed data
SD Card	Store datalogs, Alarm History, Data Tables, Trend data, export to Excel • Back up Ladder, HMI & OS, clone PLCs
Enhanced Features	Trends: graph any value and display on HMI • Built-in Alarm management system • String Library: instantly switch HMI language
<b>Operator Panel</b>	
Type	TFT LCD
Display Backlight Illumination	White LED
Colors	65,536 colors, 16 bit resolution • Brightness - Adjustable via touchscreen or software
Display Resolution & Size	800 x 480 pixels, 7"
Touchscreen	Resistive, Analog
Keys	Virtual keyboard
<b>General</b>	
Power Supply	12/24VDC
Battery	7 years typical at 25°C, battery back-up for all memory sections and RTC
Clock	Real-time clock functions (date and time)
Environment	IP66/IP65/NEMA4X (when panel mounted)
Standard	CE, UL Many of our products are also UL Class 1 Div 2 and GOST certified - please contact Unitronics

# VISION 570™/560™

Advanced PLC from the back-big & beautiful color 5.7" touchscreen from the front. Snap-in I/Os for an All-in-One; expand up to 1000 I/Os

## Features:

### HMI

- Up to 1024 user-designed screens
- 500 images per application
- HMI graphs - color-code Trends
- Built-in alarm screens
- Text String Library - easy localization
- Memory and communication monitoring via HMI - No PC needed

### PLC

- I/O options include high-speed, temperature & weight measurement
- Auto-tune PID, up to 24 independent loops
- Recipe programs and datalogging via Data Tables
- SD card - log, backup, clone & more
- Date & Time-based control

### Communication

- TCP/IP via Ethernet
- Web server: Use built-in HTML pages, or design complex pages to view and edit PLC data via the Internet
- Send e-mail function
- SMS messaging
- GPRS/GSM
- Remote Access utilities
- MODBUS protocol support
- BACnet, M-bus – via 3rd-party converter
- CANbus: CANopen, UniCAN, SAE J1939 and more
- DF1 Slave
- SNMP Agent V1
- FB Protocol Utility: enables serial or TCP/IP communications with 3rd-party device; barcode readers, frequency converters, etc
- Ports: supplied with 2 isolated RS232/RS485 and 1 CANbus; In Vision570: 1 USB programming port; 1 port may be added for serial/Ethernet

### V560



### V570

Classic Panel



### V570-J

Flat Panel

“ For a first time user, I had a great experience. I look forward to incorporating this brand of product on future jobs. ”

CE/UL

Jeremy Charles Keene,  
Controls Manager at General Broach Company

	<b>V570</b>		<b>V560</b>
Article Number	<b>V570-57-T20B</b>	<b>V570-57-T20B-J</b>	<b>V560-T25B*</b>
<b>I/O Options</b>			
Snap-in I/O Modules	Plug these modules directly into the back of the Vision unit to create a self-contained PLC with up to 62 I/Os. Inputs may include Digital, Analog, and Temperature measurement. Outputs may include Transistor, Relay, or Analog. (sold separately)		
I/O Expansion	Local or Remote I/Os may be added via expansion port or via CANbus. Expand up to 1000 I/Os		
<b>Program</b>			
Application Memory	Application Logic: 2MB • Images: 12MB • Fonts: 1MB		
Scan Time	9µsec per 1K of typical application		
Memory Operands	8192 coils, 4096 registers, 512 long integers (32-bit), 256 double words (32-bit unsigned), 64 floats, 384 timers (32-bit), 32 counters. Additional non-retainable operands: 1024 X-bits, 512 X-integers, 256 X-long integers, 64 X-double words		
Data Tables	120K dynamic RAM data (recipe parameters, datalogs, etc.), up to 256K fixed data		
SD Card	Store datalogs, Alarm History, Data Tables, Trend data, export to Excel • Back up Ladder, HMI & OS, clone PLCs		
Enhanced Features	Trends: graph any value and display on HMI • Built-in Alarm management system • String Library: instantly switch HMI language		
<b>Operator Panel</b>			
Type	TFT LCD		
Display Backlight Illumination	White LED		
Colors	65,536 colors, 16 bit resolution • Brightness - Adjustable via touchscreen or software		
Display Resolution & Size	320 x 240 pixels (QVGA), 5.7"		
Touchscreen	Resistive, Analog		
Keys	Virtual keyboard	24 programmable keys. Labeling options – function keys or customized	
<b>General</b>			
Power Supply	12/24VDC		
Battery	7 years typical at 25°C, battery back-up for all memory sections and RTC		
Clock	Real-time clock functions (date and time)		
Environment	IP65/NEMA4X (when panel mounted)	IP66/IP65/NEMA4X (when panel mounted)	IP65/NEMA4X (when panel mounted)
Standard	CE, UL Many of our products are also UL Class 1 Div 2 and GOST certified - please contact Unitronics		

\* Not yet UL certified

# VISION 430™

Advanced PLC integrated with a 4.3" wide aspect color touchscreen. Includes an onboard I/O configuration; expand up to 512 I/Os

## Features:

### HMI

- 1024 user-designed screens and 250 images per application
- HMI graphs - color-code Trends
- Built-in alarm screens
- Text String Library - easy localization
- Memory and communication monitoring via HMI - No PC needed

### PLC

- I/O options include high-speed, temperature & weight measurement
- Auto-tune PID, up to 24 independent loops
- Recipe programs and datalogging via Data Tables
- Micro SD card - log, backup, clone & more
- Date & Time-based control

### Communication

- TCP/IP via Ethernet
- Web server: Use built-in HTML pages, or design complex pages to view and edit PLC data via the Internet
- Send e-mail function
- SMS messaging
- GPRS/GSM
- Remote Access utilities
- MODBUS protocol support
- BACnet, M-bus – via 3rd-party converter
- CANbus: CANopen, UniCAN, SAE J1939 and more
- DF1 Slave
- SNMP Agent V1
- FB Protocol Utility: enables serial or TCP/IP communications with 3<sup>rd</sup>-party device; barcode readers, frequency converters, etc
- Ports: supplied with mini-USB programming port and 1 RS232/RS485 ; 2 ports may be added: 1 Serial/Ethernet/Profibus and 1 CANbus



V430

“ The huge advantage of this PLC was that - with everything built-in - the communications and use of tags in the HMI was so simple and intuitive. ”

CE/UL

Ashley Parr,  
HPS

<b>V430</b>										
Article Number	V430-J-B1	V430-J-RH2	V430-J-R34	V430-J-TR34	V430-J-RH6	V430-J-RA22	V430-J-TRA22	V430-J-T2	V430-J-T38	V430-J-TA24
	No onboard I/Os	10 Digital 2 D/A Inputs <sup>1</sup> 6 Relay Outputs 2 High-speed Transistor Outputs	20 Digital 2 D/A Inputs <sup>1</sup> 12 Relay Outputs	20 Digital 2 D/A Inputs <sup>1</sup> 8 Relay 4 High speed Transistor Outputs	6 Digital, 2 D/A 4 Analog Inputs <sup>1</sup> 6 Relay Outputs 2 High-speed Transistor Outputs	8 Digital 2 D/A, 2 PT100/TC/ Digital <sup>1</sup> Inputs 8 Relay 2 Analog Outputs	8 Digital, 2 D/A 2 PT100/TC/ Digital <sup>1</sup> Inputs 4 Relay, 2 Analog 4 High-speed Transistor Outputs	10 Digital 2 D/A Inputs <sup>1</sup> 12 Transistor Outputs	20 Digital 2 D/A Inputs <sup>1</sup> 16 Transistor Outputs	8 Digital 2 D/A, 2 PT100/ TC/Digital <sup>1</sup> Inputs 10 Transistor 2 Analog Outputs
<b>Inputs</b>										
Digital pnp/npn		12	22	22	8	12	12	12	22	12
HSC/Shaft-Encoder/ Max. Freq. Measurer <sup>2&amp;3</sup>		3 200kHz <sup>4</sup> 32-bit	3 30kHz 32-bit	3 200kHz <sup>4</sup> 32-bit	1 200kHz <sup>4</sup> 32-bit	1 30kHz 32-bit	1 200kHz <sup>4</sup> 32-bit	3 30kHz 32-bit	2 30kHz 32-bit	1 30kHz 32-bit
Analog	None	2 10-bit, 0-10V 0-20mA 4-20mA	2 10-bit, 0-10V 0-20mA 4-20mA	2 10-bit, 0-10V 0-20mA 4-20mA	2 10-bit, 0-10V 0-20mA, 4-20mA and 4 10-bit, 0-20mA 4-20mA	2 14-bit 0-10V, 0-20mA 4-20mA	2 (2 modes) Normal: 14-bit Fast: 12-bit 0-10V, 0-20mA 4-20mA	2 10-bit 0-10V 0-20mA 4-20mA	2 10-bit 0-10V, 0-20mA 4-20mA	2 (2 modes) Normal: 14-bit Fast: 12-bit 0-10V, 0-20mA, 4-20mA
Temperature Measurement		None	None	None	None	2 PT100/TC	2 PT100/TC	None	None	2 PT100/TC
<b>Outputs</b>										
Digital		6 relay	12 relay	8 relay	6 relay	8 relay	4 relay	12 pnp	16 pnp	10 pnp
High-Speed Outputs/PWM	None	None	None	4 npn (3 PTO) 200kHz max	None	None	4 npn (2 PTO) 200kHz max	7 0.5kHz	7 0.5kHz	5 0.5kHz
Analog		None	None	None	None	2 12-bit 0-10V, 4-20mA	2 12-bit 0-10V, 4-20mA	None	None	2 12-bit 0-10V, 4-20mA
<b>I/O Expansion</b>	Local or Remote I/Os may be added via expansion port or via CANbus. Expand up to 512 I/Os									
<b>Program</b>	Application Logic: 512K • Images: 12MB • Fonts: 1MB									
Application Memory	15µ sec per 1K of typical application									
Scan Time	8192 coils, 4096 registers, 512 long integers (32-bit), 256 double words (32-bit unsigned), 64 floats, 384 timers (32-bit), 32 counters Additional non-retainable operands: 1024 X-bits, 512 X-integers, 256 X-long integers, 64 X-double words									
Memory Operands	120K dynamic RAM data (recipe parameters, datalogs, etc.), up to 256K fixed data									
Data Tables	Store datalogs, Alarm History, Data Tables, Trend data, export to Excel • Back up Ladder, HMI & OS, clone PLCs									
SD Card (Micro)	Trends: graph any value and display on HMI • String Library: instantly switch HMI language									
Enhanced Features										
<b>Operator Panel</b>	TFT LCD • 65,536 colors, 16-bit resolution • Brightness - Adjustable via touchscreen or software									
Type & Colors	Resolution: 480x272 pixels • Size: 4.3"									
Display	Resistive, Analog									
Touchscreen	5 programmable keys. Labeling options - function keys, arrows, or customized									
Keys										
<b>General</b>	24VDC, except for V430-J-B1, which is 12/24VDC									
Power Supply	7 years typical at 25°C, battery back-up for all memory sections and RTC									
Battery	Real-time clock functions (date and time)									
Clock	IP66/IP65/NEMA4X (when panel mounted)									
Environment	CE, UL									
Standard	Many of our products are also UL Class 1 Div 2 and GOST certified - please contact Unitronics									

<sup>1</sup> Adapt specific inputs to function as digital or analog, and in certain models as TC or PT100. This reduces the number of free digital inputs. For example, V430-J-RA22 offers 12 digital inputs. Implementing 2 TC inputs requires 4, leaving 8 free.

<sup>2</sup> Certain inputs can function as high-speed counters, shaft-encoder inputs, or normal digital inputs.

<sup>3</sup> This specification depends on cable length.

<sup>4</sup> This specification depends upon driver type.

# VISION350™

Advanced PLC integrated with a 3.5" color touchscreen. Includes an onboard I/O configuration; expand up to 512 I/Os

## Features:

### HMI

- 1024 user-designed screens
- 250 images per application
- HMI graphs - color-code Trends
- Built-in alarm screens
- Text String Library - easy localization
- Memory and communication monitoring via HMI - No PC needed

### PLC

- I/O options include high-speed, temperature & weight measurement
- Auto-tune PID, up to 24 independent loops
- Recipe programs and datalogging via Data Tables
- Micro SD card - log, backup, clone & more
- Date & Time-based control

### Communication

- TCP/IP via Ethernet
- Web server: Use built-in HTML pages, or design complex pages to view and edit PLC data via the Internet
- Send e-mail function
- SMS messaging
- GPRS/GSM
- Remote Access utilities
- MODBUS protocol support
- BACnet, M-bus – via 3rd-party converter
- CANbus: CANopen, UniCAN, SAE J1939 and more
- DF1 Slave
- SNMP Agent V1
- FB Protocol Utility: enables serial or TCP/IP communications with 3<sup>rd</sup>-party device; barcode readers, frequency converters, etc
- Ports: supplied with 1 RS232/RS485; 2 ports may be added: 1 Serial/Ethernet/Profibus and 1 CANbus



**V350-J**  
Flat Panel



**V350**  
Classic Panel



**NEW!** Extended temperature range unit, operational temperature between -30°C to 60°C.

Available with classic or flat panel design  
Extended temperature options also available for Ethernet and CANBus cards.

Classic panel p/n: V350-S-TA24, Flat panel p/n: V350-JS-TA24, CANBus p/n: V100-S-CAN Ethernet p/n V100-S-ET2



“ There were significant cost savings using the Unitronics PLC. ”



Justin Butler,  
Senior Electrical Engineer at Energy Plant Solutions

		<b>V350</b>									
Article Number	Classic Panel	V350-35-B1	V350-35-TR20	V350-35-R34	V350-35-TR34	V350-35-TR6	V350-35-RA22	V350-35-TRA22	V350-35-T2	V350-35-T38	V350-35-TA24
	Flat Panel	V350-J-B1	V350-J-TR20	V350-J-R34	V350-J-TR34	V350-J-TR6	V350-J-RA22	V350-J-TRA22	V350-J-T2	V350-J-T38	V350-J-TA24
		No onboard I/Os	10 Digital 2 D/A Inputs <sup>1</sup> 6 Relay Outputs 2 High-speed Transistor Outputs	20 Digital 2 D/A Inputs <sup>1</sup> 12 Relay Outputs	20 Digital 2 D/A Inputs <sup>1</sup> 8 Relay 4 High speed Transistor Outputs	6 Digital, 2 D/A 4 Analog Inputs <sup>1</sup> 6 Relay Outputs 2 High-speed Transistor Outputs	8 Digital, 2 D/A 2 PT100/TC/ Digital <sup>1</sup> Inputs 8 Relay 2 Analog Outputs	8 Digital, 2 D/A 2 PT100/TC/ Digital <sup>1</sup> Inputs 4 Relay, 2 Analog 4 High-speed Transistor Outputs	10 Digital 2 D/A Inputs <sup>1</sup> 12 Transistor Outputs	20 Digital 2 D/A Inputs <sup>1</sup> 16 Transistor Outputs	8 Digital 2 D/A, 2 PT100/ TC/Digital <sup>1</sup> Inputs 10 Transistor 2 Analog Outputs
<b>Inputs</b>											
Digital pnp/npn			12	22	22	8	12	12	12	22	12
HSC/Shaft-Encoder/ Max. Freq. Measurer <sup>2&amp;3</sup>			3 200kHz <sup>4</sup> 32-bit	3 30kHz 32-bit	3 200kHz <sup>4</sup> 32-bit	1 200kHz <sup>4</sup> 32-bit	1 30kHz 32-bit	1 200kHz <sup>4</sup> 32-bit	3 30kHz 32-bit	2 30kHz 32-bit	1 30kHz 32-bit
Analog		None	2 10-bit, 0-10V 0-20mA 4-20mA	2 10-bit, 0-10V 0-20mA 4-20mA	2 10-bit, 0-10V 0-20mA 4-20mA	2 10-bit, 0-10V 0-20mA, 4-20mA and 4 10-bit, 0-20mA 4-20mA	2 14-bit 0-10V, 0-20mA 4-20mA	2 (2 modes) Normal: 14-bit Fast: 12-bit 0-10V, 0-20mA 4-20mA	2 10-bit 0-10V 0-20mA 4-20mA	2 10-bit 0-10V, 0-20mA 4-20mA	2 (2 modes) Normal: 14-bit Fast: 12-bit 0-10V, 0-20mA, 4-20mA
Temperature Measurement			None	None	None	None	2 PT100/TC	2 PT100/TC	None	None	2 PT100/TC
<b>Outputs</b>											
Digital		None	6 relay	12 relay	8 relay	6 relay	8 relay	4 relay	12 pnp	16 pnp	10 pnp
High-Speed Outputs/PWM			2 npn (2 PTO) 200kHz max	None	4 npn (3 PTO) 200kHz max	2 npn (2 PTO) 200kHz max	None	2 npn (2 PTO) 200kHz max	7 0.5kHz	7 0.5kHz	5 0.5kHz
Analog			None	None	None	None	2 12-bit 0-10V, 4-20mA	2 12-bit 0-10V, 4-20mA	None	None	2 12-bit 0-10V, 4-20mA
<b>I/O Expansion</b>		Local or Remote I/Os may be added via expansion port or via CANbus. Expand up to 512 I/Os									
<b>Program</b>		Application Logic: 1MB • Images: 6MB • Fonts: 512K									
Application Memory		Application Logic: 1MB • Images: 6MB • Fonts: 512K									
Scan Time		15µ sec per 1K of typical application									
Memory Operands		8192 coils, 4096 registers, 512 long integers (32-bit), 256 double words (32-bit unsigned), 64 floats, 384 timers (32-bit), 32 counters Additional non-retainable operands: 1024 X-bits, 512 X-integers, 256 X-long integers, 64 X-double words									
Data Tables		120K dynamic RAM data (recipe parameters, datalogs, etc.), up to 256K fixed data									
SD Card (Micro)		Store datalogs, Alarm History, Data Tables, Trend data, export to Excel • Back up Ladder, HMI & OS, clone PLCs									
Enhanced Features		Trends: graph any value and display on HMI • String Library: instantly switch HMI language									
<b>Operator Panel</b>		TFT LCD • 65,536 colors, 16-bit resolution • Brightness- Adjustable via touchscreen or software									
Type & Colors		TFT LCD • 65,536 colors, 16-bit resolution • Brightness- Adjustable via touchscreen or software									
Display		Resolution: 320 x 240 pixels (QVGA) • Size: 3.5"									
Touchscreen		Resistive, Analog									
Keys		5 programmable keys. Labeling options- function keys, arrows, or customized									
<b>General</b>		24VDC, except for V350-35-B1, which is 12/24VDC									
Power Supply		24VDC, except for V350-35-B1, which is 12/24VDC									
Battery		7 years typical at 25°C, battery back-up for all memory sections and RTC									
Clock		Real-time clock functions (date and time)									
Environment		IP66/IP65/NEMA4X (when panel mounted)									
Standard		CE, UL									
		Many of our products are also UL Class 1 Div 2 and GOST certified - please contact Unitronics									

V350-S-TA24  
V350-JS-TA24

<sup>1</sup> Adapt specific inputs to function as digital or analog, and in certain models as TC or PT100. This reduces the number of free digital inputs. For example, V350-35-RA22 offers 12 digital inputs. Implementing 2 TC inputs requires 4, leaving 8 free.

<sup>2</sup> Certain inputs can function as high-speed counters, shaft-encoder inputs, or normal digital inputs.

<sup>3</sup> This specification depends on cable length.

<sup>4</sup> This specification depends upon driver type.

# VISION 130™

Palm-size, powerful PLC with built-in, black & white LCD 1.3" graphic display, keypad, & onboard I/O configuration, expand up to 256 I/Os

## Features:

### HMI

- 1024 user-designed screens
- 400 images per application
- HMI graphs & Trends
- Built-in alarm screens
- Text String Library - easy localization
- Memory and communication monitoring via HMI - No PC needed

### PLC

- I/O options include high-speed, temperature & weight measurement
- Auto-tune PID, up to 24 independent loops
- Recipe programs and datalogging via Data Tables
- Micro SD card - log, backup, clone & more
- Date & Time-based control

### Communication

- TCP/IP via Ethernet
- Web server: Use built-in HTML pages, or design complex pages to view and edit PLC data via the Internet
- Send e-mail function
- SMS messaging
- GPRS/GSM
- Remote Access utilities
- MODBUS protocol support
- BACnet, M-bus – via 3rd-party converter
- CANbus: CANopen, UniCAN, J1939 and more
- DF1 Slave
- SNMP Agent V1
- FB Protocol Utility: enables serial or TCP/IP communications with 3<sup>rd</sup>-party device; barcode readers, frequency converters, etc
- Ports: supplied with 1 RS232/RS485; 2 ports may be added: 1 Serial/Ethernet/Profibus and 1 CANbus



**V130-J**  
Flat Panel



**V130**  
Classic Panel

“The perfect solution for our need, the Vision130™ is easy to program, user-friendly and backed up with responsive tech support.”

Michael Lamore,  
President of Barrier1

		<b>V130</b>									
Article Number	Classic Panel	V130-33-B1	V130-33-TR20	V130-33-R34	V130-33-TR34	V130-33-TR6	V130-33-RA22	V130-33-TRA22	V130-33-T2	V130-33-T38	V130-33-TA24
	Flat Panel	V130-J-B1	V130-J-TR20	V130-J-R34	V130-J-TR34	V130-J-TR6	V130-J-RA22	V130-J-TRA22	V130-J-T2	V130-J-T38	V130-J-TA24
		No onboard I/Os	10 Digital 2 D/A Inputs <sup>1</sup> 6 Relay Outputs 2 High-speed Transistor Outputs	20 Digital 2 D/A Inputs <sup>1</sup> 12 Relay Outputs	20 Digital 2 D/A Inputs <sup>1</sup> 8 Relay 4 High speed Transistor Outputs	6 Digital, 2 D/A 4 Analog Inputs <sup>1</sup> 6 Relay Outputs 2 High-speed Transistor Outputs	8 Digital 2 D/A, 2 PT100/TC/ Digital <sup>1</sup> Inputs 8 Relay 2 Analog Outputs	8 Digital, 2 D/A 2 PT100/TC/ Digital <sup>1</sup> Inputs 4 Relay, 2 Analog 4 High-speed Transistor Outputs	10 Digital 2 D/A Inputs <sup>1</sup> 12 Transistor Outputs	20 Digital 2 D/A Inputs <sup>1</sup> 16 Transistor Outputs	8 Digital 2 D/A, 2 PT100/ TC/Digital <sup>1</sup> Inputs 10 Transistor 2 Analog Outputs
<b>Inputs</b>											
Digital pnp/npn		None									
HSC/Shaft-Encoder/ Max. Freq. Measurer <sup>2&amp;3</sup>		None									
Analog		None									
Temperature Measurement		None									
<b>Outputs</b>											
Digital		None									
High-Speed Outputs/PWM		None									
Analog		None									
<b>I/O Expansion</b>		Local or Remote I/Os may be added via expansion port or via CANbus. Expand up to 256 I/Os									
<b>Program</b>											
Application Memory		Application Logic: 512K • Images: 256K • Fonts: 128K									
Scan Time		20µ sec per 1K of typical application									
Memory Operands		4096 coils, 2048 registers, 256 long integers (32-bit), 64 double words (32-bit unsigned), 24 floats, 192 timers (32-bit), 24 counters Additional non-retainable operands: 1024 X-bits, 512 X-integers, 256 X-long integers, 64 X-double words									
Data Tables		120K dynamic RAM data (recipe parameters, datalogs, etc.), up to 256K fixed data									
SD Card (Micro)		Store datalogs, Alarm History, Data Tables, Trend data, export to Excel • Back up Ladder, HMI & OS, clone PLCs									
Enhanced Features		Trends: graph any value and display on HMI • Built-in Alarm management system • String Library: instantly switch HMI language									
<b>Operator Panel</b>											
Type		Graphic STN LCD, white LED backlight									
Display		Resolution: 128 x 64 pixels • Size: 2.4”									
Keys		20, including 10 user labeled keys (slide kit sold separately)									
<b>General</b>											
Power Supply		24VDC, except for V130-33-B1, which is 12/24VDC									
Battery		7 years typical at 25°C, battery back-up for all memory sections and RTC									
Clock		Real-time clock functions (date and time)									
Environment		IP66/IP65/NEMA4X (when panel mounted)									
Standard		CE, UL Many of our products are also UL Class 1 Div 2 and GOST certified - please contact Unitronics									

<sup>1</sup> In these models certain inputs are adaptable, and can function as either digital, analog, and in certain models also as thermocouple or PT100. Using adaptable inputs reduces the amount of free digital inputs. For example, V130-33-RA22 offers 12 digital inputs. Implementing 2 TC inputs requires 4 digital inputs, leaving 8 free.

<sup>2</sup> Certain inputs can function as high-speed counters, shaft-encoder inputs, or normal digital inputs.

<sup>3</sup> This specification depends on cable length.

<sup>4</sup> This specification depends upon driver type.

# VISION 120™

Full-function PLC with built-in, monochrome graphic LCD display, keypad, & onboard I/O configuration; expand up to 256 I/Os



# 120™

- HMI**
- Up to 255 user-designed screens
  - Hundreds of images per application
  - HMI graphs & Trends
  - Memory and communication monitoring via HMI - No PC needed

- PLC**
- I/O options include high-speed, temperature & weight measurement
  - Auto-tune PID, up to 12 independent loops
  - Recipe programs and datalogging via Data Tables
  - Date & Time-based control

## Communication

- SMS messaging
- GPRS/GSM
- Remote Access utilities
- MODBUS protocol support
- BACnet, M-bus – via 3rd-party converter
- CANbus: CANopen, UniCAN (in C models only)
- FB Protocol Utility: enables serial or TCP/IP communications with 3rd-party device; barcode readers, frequency converters, etc
- 2 RS232/RS485 built-in ports

Article Number	V120-22-R1	V120-22-R2C	V120-22-R6C	V120-22-R34	V120-22-T1	V120-22-T38	V120-22-T2C	V120-22-UN2	V120-22-UA2	V120-22-RA22
	10 Digital 1 Analog Inputs  6 Relay Outputs	10 Digital 2 Analog Inputs  6 Relay Outputs	6 Digital 6 Analog Inputs  6 Relay Outputs	20 Digital 2 D/A <sup>1</sup> Inputs  12 Relay Outputs	12 Digital Inputs  12 Transistor Outputs	22 Digital Inputs  16 Transistor Outputs	10 Digital 2 D/A <sup>1</sup> Inputs  12 Transistor Outputs	10 Digital 2 D/A/PT100/ TC <sup>1</sup> Inputs  12 Transistor Outputs	10 Digital 2 D/A/TC <sup>1</sup> Inputs  10 Transistor 2 Analog Outputs	8 Digital 2 D/A, 2 PT100/ TC/Digital <sup>1</sup> Inputs  8 Relay 2 Analog Outputs
<b>Inputs</b>										
Digital pnp/npn	<b>10</b>	<b>10</b>	<b>6</b>	<b>22</b>	<b>12</b>	<b>22</b>	<b>12</b>	<b>12</b>	<b>12</b>	<b>12</b>
HSC/Shaft-Encoder/ Max Freq. Measur <sup>2</sup>	<b>3</b> 10kHz 32-bit	<b>3</b> 10kHz 32-bit	<b>1</b> 10kHz 32-bit	<b>3</b> 10kHz <sup>3</sup> 32-bit	<b>2</b> 10kHz 32-bit	<b>2</b> 10kHz <sup>3</sup> 32-bit	<b>3</b> 10kHz 32-bit	<b>2</b> 10kHz 32-bit	<b>1</b> 10kHz <sup>3</sup> 32-bit	<b>1</b> 10kHz <sup>3</sup> 32-bit
Analog	<b>1</b> 10-bit 0-10V, 0-20mA 4-20mA	<b>2</b> 10-bit 0-10V, 0-20mA 4-20mA	<b>6</b> 10-bit, <b>2</b> 0-10V 0-20mA, 4-20mA <b>and 4</b> 0-20mA 4-20mA	<b>2</b> 10-bit 0-10V, 0-20mA 4-20mA	None	None	<b>2</b> 10-bit 0-10V 0-20mA 4-20mA	<b>2</b> 14-bit 0-10V, 0-20mA 4-20mA PT100/TC	<b>2</b> 14-bit 0-10V, 0-20mA 4-20mA TC	<b>2</b> 14-bit 0-10V, 0-20mA 4-20mA
Temperature Measurement	None	None	None	None	None	None	None	None	None	<b>2</b> PT100/TC
<b>Outputs</b>										
Digital	<b>6</b> relay	<b>6</b> relay	<b>6</b> relay	<b>12</b> relay	<b>12</b> pnp	<b>16</b> pnp	<b>12</b> pnp	<b>12</b> pnp	<b>10</b> pnp	<b>8</b> relay
High-Speed Outputs/ PWM <sup>4</sup>	None	None	None	None	2, first 2 outputs can function as HSO, 0.5kHz maximum					None
Analog	None	None	None	None	None	None	None	None	<b>2</b> 12-bit 0-10V, 4-20mA	<b>2</b> 12-bit 0-10V, 4-20mA
<b>I/O Expansions</b>	Local or Remote I/Os may be added via expansion port or via CANbus. Expand up to 256 I/Os									
<b>Program</b>	448K (virtual) Ladder code capacity									
Application Memory	48µ sec per 1K of typical application									
Memory Scan Time	4096 coils, 2048 registers, 256 long integers (32-bit), 64 double words (32-bit unsigned), 24 floats, 192 timers (32-bit), 24 counters									
Operands	120K dynamic RAM data (recipe parameters, datalogs, etc.), up to 256K fixed data									
Data Tables										
<b>Operator Panel</b>	Graphic STN LCD									
Type	Resolution: 128 x 64 pixels • Size: 2.4"									
Display	16 keys									
Keys										
<b>General</b>	7 years typical at 25°C, battery back-up for all memory sections and RTC									
Power Supply	12/24VDC	12/24VDC	24VDC	24VDC	12/24VDC	24VDC	12/24VDC	12/24VDC	24VDC	24VDC
Battery	Real-time clock functions (date and time)									
Clock	IP65/NEMA4X (when panel mounted)									
Environment	CE, UL									
standard	Many of our products are also UL Class 1 Div 2 and GOST certified - please contact Unitronics									

<sup>1</sup> In these models certain inputs are adaptable, and can function as either digital, analog, and in certain models also as thermocouple or PT100. Using adaptable inputs reduces the amount of free digital inputs. For example, V120-22-UA2 offers 12 digital inputs. Implementing 2 TC inputs requires 4 digital inputs, leaving 8 free.

<sup>2</sup> Certain inputs can function as high-speed counters, shaft-encoder inputs, or normal digital inputs.

<sup>3</sup> This specification depends on cable length.

<sup>4</sup> Certain outputs can function as high-speed or PWM outputs.

# VISION 200™

Advanced PLCs with an integrated operator panel graphic or touch. Snap-in I/Os to create an All-in-One; expand up to 316 I/Os

## Features:

### HMI

- Up to 255 user-designed screens
- Hundreds of images per application
- HMI graphs & Trends
- Virtual alpha-numeric keypad (in V290 & V530)
- Memory and communication monitoring via HMI - No PC needed

### PLC

- I/O options include high-speed, temperature & weight measurement
- Auto-tune PID, up to 12 independent loops
- Recipe programs and datalogging via Data Tables
- Date & Time-based control

### Communication

- TCP/IP via Ethernet
- Send e-mail function
- SMS messaging
- GPRS/GSM
- Remote Access utilities
- MODBUS protocol support
- BACnet, M-bus – via 3rd-party converter
- CANbus: CANopen, UniCAN, CANlayer 2
- FB Protocol Utility: enables serial or TCP/IP communications with 3rd-party device; barcode readers, frequency converters, etc
- Ports: supplied with 1 RS232, 1 RS232/RS485 and 1 CANbus; 1 port may be added for serial/Ethernet
- V280-B25B & V290-B25B Not yet UL certified.

	V230™	V260™	V280™	V290™	V530™																				
<b>Article Number</b>	V230-13-B20B	V260-16-B20B	V280-18-B20B	V290-19-B20B	V530-53-B20B																				
<b>I/O Options</b>	Snap-in I/O Modules Plug these modules directly into the back of the Vision unit to create a self-contained PLC with up to 62 I/Os. Inputs may include Digital, Analog and Temperature Measurement. Outputs may include Transistor, Relay or Analog (sold separately)																								
I/O Expansion	Local or remote I/Os may be added via expansion port or via CANbus. Expand up to 316 I/Os																								
<b>Program</b>	Application Memory: 1MB Scan Time: 30µsec per 1K of typical application Operands: 4096 coils, 2048 registers, 256 long integers (32 bit), 64 double words (32 bit unsigned), 24 memory floats, 192 timers, 24 counters Data Tables: 120K dynamic RAM data (recipe parameters, datalogs, etc.), up to 192K fixed data																								
<b>Operator Panel</b>	<table border="1"> <tr> <td>Type</td> <td>STN LCD</td> <td>Negative blue, STN LCD</td> <td colspan="2">Black &amp; White FSTN LCD</td> </tr> <tr> <td>Display Resolution &amp; Size</td> <td>128 x 64 pixels 3.2"</td> <td>240 x 64 pixels 5.4"</td> <td>320 x 240 pixels (QVGA), 4.7" active area</td> <td>320 x 240 pixels (QVGA), 5.7" active area</td> </tr> <tr> <td>Touch Screen</td> <td>None</td> <td>None</td> <td colspan="2">Resistive, Analog</td> </tr> <tr> <td>Keys</td> <td>24 user labeled keys</td> <td>33 user labeled keys</td> <td>27 user labeled keys</td> <td>Virtual keyboard</td> </tr> </table>					Type	STN LCD	Negative blue, STN LCD	Black & White FSTN LCD		Display Resolution & Size	128 x 64 pixels 3.2"	240 x 64 pixels 5.4"	320 x 240 pixels (QVGA), 4.7" active area	320 x 240 pixels (QVGA), 5.7" active area	Touch Screen	None	None	Resistive, Analog		Keys	24 user labeled keys	33 user labeled keys	27 user labeled keys	Virtual keyboard
Type	STN LCD	Negative blue, STN LCD	Black & White FSTN LCD																						
Display Resolution & Size	128 x 64 pixels 3.2"	240 x 64 pixels 5.4"	320 x 240 pixels (QVGA), 4.7" active area	320 x 240 pixels (QVGA), 5.7" active area																					
Touch Screen	None	None	Resistive, Analog																						
Keys	24 user labeled keys	33 user labeled keys	27 user labeled keys	Virtual keyboard																					
<b>General</b>	Power Supply: 12/24VDC Battery Back-up: 7 years typical at 25°C, back-up for all memory sections and real-time clock (RTC) Environment: IP65/NEMA4X (when panel mounted) Standard: CE, UL Many of our products are also UL Class 1 Div 2 and GOST certified - please contact Unitronics																								

Full-function PLC with built-in beautiful full-color touch-screen, & onboard I/O configuration. Great look, incredible price.

## Features:

### HMI

- Display: Color touch-screen  
3.5" - 320 x 240, 4.3" - 480x272, 7" - 800 x 480
- 24 user-designed screens and 40 images per application
- HMI graphs - color-code Trends
- Built-in alarm screens
- Text String Library - easy localization
- Memory and communication monitoring via HMI - No PC needed

### PLC

- I/O options: Digital, Analog, including High-speed
- Auto-tune PID, 2 independent loops
- Recipe programs and data logging via Data Tables
- Date & Time-based control

### Communication

- TCP/IP via Ethernet
- Send e-mail function
- SMS messaging
- GPRS/GSM
- Remote Access utilities
- MODBUS protocol supported
- BACnet, M-bus – via 3rd-party converter
- CANbus: CANopen, UniCAN, SAE J1939, and more
- DF1 Slave
- Programming Port: RS232 for 3.5" model, USB for 4.3" & 7"
- 2 ports may be added: 1 Serial (RS232/RS485)/Ethernet & 1 CANbus



**SAMBA 3.5"**



**SAMBA 4.3"**



**SAMBA 7"**

“ It really enhanced our product’s look and flexibility. ”

Ralph Hannmann,  
President of Alyan Pump Company

Article Number	<b>SAMBA</b>	
	SM35-J-R20	SM35-J-T20
	SM43-J-R20	SM43-J-T20
	<b>New</b> SM70-J-R20	<b>New</b> SM70-J-T20
	<b>10</b> Digital Inputs <b>2</b> Digital /Analog <sup>1</sup> <b>8</b> Relay Outputs	<b>10</b> Digital Inputs <b>2</b> Digital /Analog <b>8</b> Transistor Outputs
<b>Inputs</b>		
Digital	<b>12</b>	<b>12</b>
HSC/Shaft-Encoder/Max. Freq. Measurer <sup>2,3</sup>	<b>1</b> 32-bit 30 kHz	<b>3</b> 32-bit 30 kHz
Analog	2: 10-bit, 0-10v 0-20mA, 4-20mA	2: 10-bit, 0-10v 0-20mA, 4-20mA
<b>Outputs</b>		
Digital	<b>8</b> relay	<b>8</b> pnp
High-Speed Outputs/PWM	None	Outputs 0 to 6 can be used as PWM outputs 0.5 kHz
Analog	None	
<b>I/O Expansion</b>	Remote I/Os via CANbus	
<b>Program</b>		
Application Memory <span style="float: right;">SM35 SM43 <b>New</b> SM70</span>	Application Logic: 112kb • Images: <b>1 MB</b> • Fonts: 512 k Application Logic: 112kb • Images: <b>2 MB</b> • Fonts: 512 k Application Logic: 112kb • Images: <b>5 MB</b> • Fonts: 512 k	
Scan Time	15µS per 1K of typical application	
Memory Operands	512 coils, 256 registers, 32 long integers (32-bit), 32 double words (32-bit unsigned), 24 floats, 32 timers (32-bit), 16 counters. Additional non-retainable operands: 64 X-bits, 32 X-integers, 16 X-long integers, 16 X-double words	
Data Tables	32K dynamic RAM data (recipe parameters, datalogs, etc.), up to 16K fixed data	
SD Card (Micro)	None	
Enhanced Features	Trends: graph any value and display on HMI • String Library: instantly switch HMI language	
<b>Operator Panel</b>		
Type & Colors	TFT LCD • 65,536 colors • 16 bit resolution • Brightness - Adjustable via touchscreen or software	
Display <span style="float: right;">SM35 SM43 <b>New</b> SM70</span>	Resolution: 320 x 240 pixels • Size: 3.5" (QVGA) Resolution: 480 x 272 pixels • Size: 4.3" Resolution: 800 x 480 pixels • Size: 7"	
Touchscreen	Resistive, Analog	
Keys	Displays virtual keyboard when the application requires data entry	
<b>General</b>		
Power Supply	24VDC	
Battery	7 years typical at 25°C, battery back-up for RTC and system data, including variable data	
Clock	Real-time clock functions (date and time)	
Environment	NEMA4X/IP66/IP65 (when panel mounted)	
Standard	CE, UL Many of our products are also UL Class 1 Div 2 and GOST certified - please contact Unitronics	

<sup>1</sup> When selecting NPN for the digital inputs, the 2 Analog inputs cannot be used.

<sup>2</sup> Certain inputs can function as high-speed counters, shaft-encoder inputs, or normal digital inputs.

<sup>3</sup> This specification depends on cable length

# JAZZ®

An All-in-One that is as affordable as a "smart relay" - full-function PLC combined with a textual HMI and keyboard, with up to 40 onboard I/Os

## Meet the New Jazz 2 series Advantages:

- Faster performance - 30x faster
- Double the memory
- Built-in mini-USB programming port
- Ethernet via Add-on Port
- Fully compatible with current Jazz projects

## Features:

### HMI

- Up to 60 user-designed screens
- Multilingual: supports over 15 languages and 20 graphic symbols

### PLC

- Ladder Logic programming ensures functional flexibility
- Functions include: interrupt, loops, math, store & compare functions
- Date & Time-based control
- High-speed counters & PWM outputs
- Direct temperature inputs
- Auto-tune PID, up to 4 loops

### Communication

- SMS messaging via GSM
- Remote Access utilities
- PC access via MODBUS or OPC server
- Supports MODBUS protocol



**Jazz®-J**  
Flat Panel



**Jazz®**  
Classic Panel





The Unitronics PLC provided the perfect solution for our need for control. Whether it was safety, mechanical or functionality, the Jazz had it all.



Peter Spano,  
President of GTS



		<b>JZ20</b>						<b>JZ10</b>		
Article Number	Classic Panel	JZ20-R10	JZ20-R16	JZ20-R31	JZ20-T10	JZ20-T18	JZ20-T40	JZ10-11-UN20	JZ10-11-UA24	JZ10-11-PT15
	Flat Panel	JZ20-J-R10	JZ20-J-R16	JZ20-J-R31	JZ20-J-T10	JZ20-J-T18	JZ20-J-T40	JZ10-J-UN20	JZ10-J-UA24	JZ10-J-PT15
		6 Digital Inputs 4 Relay Outputs	6 Digital, 2 D/A, 2 Analog Inputs <sup>1</sup> 6 Relay Outputs	16 Digital, 2 D/A, 2 Analog Inputs <sup>1</sup> 11 Relay Outputs	6 Digital Inputs 4 Transistor Outputs	6 Digital, 2 D/A, 2 Analog Inputs <sup>1</sup> 8 Transistor Outputs	16 Digital, 2 D/A, 2 Analog Inputs <sup>1</sup> 20 Transistor Outputs	9 Digital, 2 D/A, 1 Analog 1 PT100/TC Inputs <sup>1</sup> 5 Relay, 2 Transistor Outputs	9 Digital, 2 D/A, 2 Analog, 2 PT100/TC Inputs <sup>1</sup> 5 Relay, 2 Analog, 2 Transistor Outputs	3 Digital, 3 D/A, 3 PT100/NI1000 Inputs <sup>1</sup> 5 Relay, 1 Transistor Outputs
<b>Inputs</b>										
Digital pnp/npn		6	8	18	6	8	18	11	11	6
High-Speed Counters <sup>4</sup>		2 10KHZ, 16-bit						1 5KHZ, 16-bit		
Analog		None	2 10 or 12-bit, 0-10V & 2 10-bit 0-20mA, 4-20mA	2 10 or 12-bit, 0-10V & 2 10-bit 0-20mA, 4-20mA	None	2 10-bit, 0-10V & 2 10-bit 0-20mA, 4-20mA	2 10-bit, 0-10V & 2 10-bit 0-20mA, 4-20mA	2 10-bit, 0-10V & 1 10-bit 0-20mA, 4-20mA	2 10-bit, 0-10V & 2 10-bit 0-20mA, 4-20mA	3 10-bit 0-10V <sup>2</sup>
Temperature Measurement		None	None	None	None	None	None	1 PT100/TC	2 PT100/TC	3 PT1000/NI1000
<b>Outputs</b>										
Digital		4 relay	6 relay	11 relay	4 pnp	8 pnp	20 pnp	5 relay, 2 pnp	5 relay, 2 pnp	5 relay 1 pnp/npn
High-Speed Outputs/PWM		None	None	None	2 PWM	2 PWM	2 PWM	2 PWM	2 PWM	1 HSO
Analog		None	None	None	None	None	None	None	2 12-bit +/- 10V, 4-20mA	None
<b>Program</b>										
Ladder Code Memory		48K						24K		
Memory Operands		256 coils, 256 registers, 64 timers								
<b>Operator Panel</b>										
Type		STN LCD								
Display Size		2 lines x 16 characters								
Keys		16 keys, 10 of which may be user-labeled								
<b>General</b>										
Power Supply		24VDC								
Battery		10 years typical at 25°C, battery back-up for RTC and system data, including variable data								
Clock		Real-time clock functions (date and time)								
Environment		NEMA4X/IP65 (when panel mounted)								
Standard		CE, UL								
Programming Port		Many of our products are also UL Class 1 Div 2 and GOST certified - please contact Unitronics On Board Mini USB						Article No.: JZ-PRG sold separately		
<b>Communication</b>										
Serial		RS232/RS485 Add-on port (isolated) Article No.: JZ-RS4 sold separately								
Ethernet		Ethernet add-on port Article No.: MJ20-ET1 sold separately						Not supported		

<sup>1</sup> These models comprise a total of 10/20 inputs (model-dependent). 6/16 (model-dependent) of these may be wired, in a group, as either digital npn or pnp. 2 inputs have added functionality. Both may be wired in a group as npn, pnp, or analog (voltage) inputs. Note that it is also possible to individually wire 1 input as a pnp input, and the other as an analog input. The two remaining inputs are analog (current).

<sup>2</sup> In order to download applications and enable communications, install Jazz<sup>®</sup> with the appropriate Add-on Module.

<sup>3</sup> Certain inputs can function as high-speed counters, or as normal digital inputs.

## Add-on modules and accessories<sup>2</sup>

New!

COM Port kit	Ethernet Communication Port	Program Cloner module	Keypad Slide kit
RS232/RS485 Add-on port (isolated) Article No.: JZ-RS4	Ethernet add on port <b>Supported by Jazz<sup>®</sup> 2 series only</b> Article No.: MJ20-ET1*	Copy applications from PLC to PLC Article No.: MJ20-MEM1	Customize the Jazz <sup>®</sup> keypad to your application Article No.: MJ20-JZ-SL1

\* Not yet UL certified

# M91™

An affordable All-in-One: a smart PLC with a textual HMI and keyboard, plus an onboard I/O configuration; expand up to 150 I/Os

## Features:

### HMI

- Up to 80 user-designed screens
- Multilingual: supports over 15 languages and 20 graphic symbols
- Scroll between pre-programmed recipes/menus
- Memory and communication monitoring via HMI - No PC needed

### PLC

- Shaft-encoder inputs and PWM outputs
- Direct temperature inputs
- Auto-tune PID, up to 4 loops
- Date & Time-based control
- Database
- Print utilities
- Full source upload

### Communication

- SMS messaging via GSM
- Remote access utilities
- PC access via MODBUS or OPC server
- Supports MODBUS protocol
- CANBus (in C models only)
- User-defined ASCII strings, enable communication with external devices
- RS232/RS485 built-in port



M91

<b>M91</b>										
Article Number	M91-2-R1	M91-2-R2C	M91-2-R6C	M91-2-R34	M91-2-T1	M91-2-T38	M91-2-T2C	M91-2-UN2	M91-2-UA2	M91-2-RA22
	10 Digital 1 Analog Inputs 6 Relay Outputs	10 Digital 2 Analog Inputs 6 Relay Outputs	6 Digital 6 Analog Inputs 6 Relay Outputs	20 Digital 2 D/A <sup>1</sup> Inputs 12 Relay Outputs	12 Digital Inputs 12 Transistor Outputs	22 Digital Inputs 16 Transistor Outputs	10 Digital 2 D/A <sup>1</sup> Inputs 12 Transistor Outputs	10 Digital 2 D/A/PT100/TC <sup>1</sup> Inputs 12 Transistor Outputs	10 Digital 2 D/A/TC <sup>1</sup> Inputs 10 Transistor 2 Analog Outputs	8 Digital, 2 D/A 2 PT100/TC/ Digital <sup>1</sup> Inputs 8 Relay 2 Analog Outputs
<b>Inputs</b>										
Digital pnp/npn	10	10	6	22	12	22	12	12	12	12
HSC/Shaft-Encoder/ Max. Freq. Measurer <sup>2</sup>	3 10kHz 16-bit	3 10kHz 16-bit	1 10kHz 16-bit	3 30kHz <sup>3</sup> 16-bit	2 10kHz 16-bit	2 30kHz <sup>3</sup> 16-bit	3 10kHz 16-bit	2 10kHz 16-bit	1 30kHz <sup>3</sup> 16-bit	1 30kHz <sup>3</sup> 16-bit
Analog	1 10-bit 0-10V, 0-20mA 4-20mA	2 10-bit 0-10V, 0-20mA 4-20mA	6 10-bit 2 0-10V 0-20mA, 4-20mA and 4 0-20mA 4-20mA	2 10-bit 0-10V, 0-20mA 4-20mA	None	None	2 10-bit 0-10V, 0-20mA 4-20mA	2 14-bit 0-10V, 0-20mA 4-20mA, PT100/TC	2 14-bit 0-10V, 0-20mA 4-20mA, TC	2 14-bit 0-10V, 0-20mA 4-20mA
Temperature Measurement	None	None	None	None	None	None	None			2 PT100/TC
<b>Outputs</b>										
Digital	6 relay	6 relay	6 relay	12 relay	12 pnp	16 pnp	12 pnp	12 pnp	10 pnp	8 relay
High-Speed Outputs/ PWM <sup>4</sup>	None	None	None	None	2, first 2 outputs can function as HSO, 0.5kHz maximum					None
Analog	None	None	None	None	None	None	None	None	2 12-bit: 0-10V, 4-20mA	2 12-bit: 0-10V, 4-20mA
<b>I/O Expansion</b>	I/Os may be added via expansion port. Expand up to 150 I/Os									
<b>Program</b>										
Application Memory	36K (virtual) Ladder code capacity									
Memory Operands	256 coils, 256 registers, 64 timers									
Database	1024 integers, (indirect access)									
<b>Operator Panel</b>										
Type	STN LCD									
Display Size	2 lines x 16 characters									
Keys	15 keys									
<b>General</b>										
Power Supply	12/24VDC	12/24VDC	24VDC	24VDC	12/24VDC	24VDC	12/24VDC	12/24VDC	24VDC	24VDC
Battery	7 years typical at 25°C, battery back-up for all memory sections and RTC									
Clock (RTC)	Real-time clock functions (date and time)									
Environment	IP65/NEMA4X (when panel mounted)									
Standard	CE, UL Many of our products are also UL Class 1 Div 2 and GOST certified - please contact Unitronics									

<sup>1</sup> In these models certain inputs are adaptable, and can function as either digital, analog, and in certain models also as thermocouple or PT100. Using adaptable inputs reduces the amount of free digital inputs. For example, M91-2-UA2 offers 12 digital inputs. Implementing 2 TC inputs requires 4 digital inputs, leaving 8 free.

<sup>2</sup> Certain inputs can function as high-speed counters, shaft-encoder inputs, or normal digital inputs.

<sup>3</sup> This specification depends on cable length.

<sup>4</sup> Certain outputs can function as high-speed or PWM outputs.

# I/O Expansion Modules

CE/UL

Expand your system with local or remote I/O expansion modules.

Vision series support both local & remote I/O modules. M91 supports local modules only.

## Digital Modules

<b>IO-DI8-T08</b>	<b>IO-DI8-R04</b>	<b>IO-DI8-R08</b>	<b>EX90-DI8-R08<sup>3</sup></b>	<b>IO-DI16</b>
24VDC* <b>8 Digital Inputs</b> , pnp/npn, including one High-speed Counter <b>8 pnp Transistor Outputs</b>	24VDC* <b>8 Digital Inputs</b> , pnp/npn, including one High-speed Counter <b>4 Relay Outputs</b>	24VDC* <b>8 Digital Inputs</b> , pnp/npn, including one High-speed Counter <b>8 Relay Outputs</b>	24VDC <b>8 Digital Inputs</b> , pnp, including one High-speed Counter <b>8 Relay Outputs</b>	24VDC* <b>16 Digital Inputs</b> , pnp/npn, including one High-speed Counter
<b>IO-T016</b>	<b>IO-R08</b>	<b>IO-R016</b>	<b>IO-DI8ACH</b>	
24VDC <b>16 pnp Transistor Outputs</b>	24VDC* (power supply) <b>8 Relay Outputs</b>	24VDC* (power supply) <b>16 Relay Outputs</b>	110/220 VAC <b>8 AC Inputs</b>	

\*Also available as 12VDC – contact us for part number

## High-speed Remote I/O Module

<b>EXF-RC15<sup>2,5</sup></b>
24VDC <b>9 Digital Inputs</b> pnp/npn, including <b>3</b> high-speed counter, <b>4 npn Transistor Outputs</b> , may function as high-speed PWM/PTO, <b>2 relay outputs</b>

## Analog, Temperature and Weight/Strain Measurements

<b>IO-AI4-A02</b>	<b>IO-PT400</b>	<b>IO-PT4K</b>
24VDC (power supply) <b>4 Analog Inputs</b> 12-bit, 0-10V, 0-20mA, 4-20mA, <b>2 Analog Outputs</b> , 12-bit+sign, ± 10V, 0-20mA, 4-20mA	<b>4 PT100/NI100/NI120 Inputs</b> Range PT100: -50°C ÷ 460°C (-58°F ÷ 860°F) Range NI100: -50°C ÷ 232°C (-58°F ÷ 449°F) Range NI120: -50°C ÷ 172°C (-58°F ÷ 341°F) 12-bit	<b>4 PT1000/NI1000 Inputs</b> Range PT1000: -50°C ÷ 460°C (-58°F ÷ 860°F) Range NI1000: -50°C ÷ 232°C (-58°F ÷ 449°F) 12-bit
<b>IO-A06X</b>	<b>IO-LC1<sup>4</sup></b>	<b>IO-LC3<sup>4</sup></b>
24VDC (power supply) <b>6 Isolated Analog Outputs</b> 0-10V, 0-20mA, 4-20mA 12-bit	12/24VDC (Power Supply) <b>1-3 Loadcell / Strain gauge Inputs</b> Input voltage ranges: ± 20mV, ± 80mV Excitation: AC/DC <b>1 Digital pnp Input</b> <b>2 pnp Outputs</b> <b>Not supported by all PLCs</b>	<b>8 Thermocouple/ Analog Inputs</b> T/C J, K, T, B, E, N, R, S, 0.1 <sup>0</sup> Resolution, 0-10V, 0-20mA, 4-20mA, 12/14-bit

## I/O Expansion Module Adapters

<b>EX-A2X<sup>1</sup></b>
Local I/O module adapter. Galvanic isolation. Up to <b>8</b> modules may be connected to a single PLC <sup>1</sup> . Supports both 12/24 VDC
<b>EX-RC1<sup>1,5</sup></b>
Remote I/O module adapter, via CANbus. Connect multiple adapters to a single PLC; connect up to <b>8</b> modules per adapter. Supports both 12/24 VDC.

<sup>1</sup> Number of supported I/Os & I/O modules varies according to PLC model.

<sup>2</sup> The EXF-RC15 functions as a CANbus node in a Vision UniCAN network. The EXF-RC15 is stand-alone and does not support I/O Expansion Modules.

<sup>3</sup> The EX90 is housed in an open casing. Only one EX90 can be connected per PLC, as a single expansion module; Expansion adapter not required.

<sup>4</sup> IO-LCx models are supported by the M91 & Vision series. Not supported by the M90 series.

<sup>5</sup> Supported by Vision series. Not supported by M91 series.

## XL Digital/Analog Modules

<b>IO-D16A3-R016</b>	<b>IO-D16A3-T016</b>	Functions as both I/O module and adapter*	
24VDC, <b>16 Digital Inputs</b> pnp/npn, including two High-speed Counters, <b>3 Analog Inputs</b> , 10-bit, 0-20mA, 4-20mA, <b>16 Relay Outputs</b>	24VDC, <b>16 Digital Inputs</b> pnp/npn, including one High-speed Counter, <b>3 Analog Inputs</b> , 10-bit, 0-20mA, 4-20mA, <b>15 pnp + 1 pnp/npn Transistor Outputs</b> including <b>1 HSO</b>	<b>EX-D16A3-R08</b>	<b>EX-D16A3-T016</b>
		24VDC, built-in Expansion Module Adapter, <b>16 Digital Inputs</b> , pnp/npn, including two High-speed Counters, <b>3 Analog Inputs</b> 10-bit, 0-20mA, 4-20mA, <b>8 Relay Outputs</b>	24VDC, built-in Expansion Module Adapter, <b>16 Digital Inputs</b> , pnp/npn, including one High-speed Counter, <b>3 Analog Inputs</b> 10-bit, 0-20mA, 4-20mA, <b>15 pnp + 1 pnp/npn Transistor Outputs</b> including <b>1 HSO</b>

\*Functions as local adapter. Can support up to 7 I/O modules

# Snap-in I/O Modules



Plug a Snap-in module directly into the back of a Vision PLC.  
Compatible with all V200, V500, V1040 and V1210 Vision series models.

Article No.	V200-18-E1B	V200-18-E2B	V200-18-E3XB	V200-18-E4XB	V200-18-E5B	V200-18-E6B	V200-18-E46B <sup>1</sup>	V200-18-E62B <sup>1</sup>
Digital Inputs (isolated)	16 npn/pnp (including 2 Shaft-encoder inputs)	16 npn/pnp (including 2 Shaft-encoder inputs)	18 npn/pnp (including 2 Shaft-encoder inputs)	18 npn/pnp (including 2 Shaft-encoder inputs)	18 npn/pnp (including 2 Shaft-encoder inputs)	18 npn/pnp (including 2 Shaft-encoder inputs)	18 npn/pnp (including 2 Shaft-encoder inputs)	30 npn/pnp (including 2 Shaft-encoder inputs)
Analog Inputs	3 10-bit 0-10V, 0-20mA 4-20mA	2 10-bit 0-10V, 0-20mA 4-20mA	4 isolated 12-14-bit (software dependent) 0-10V, 0-20mA 4-20mA and/or TC/PT100	4 isolated 12-14-bit (software dependent) 0-10V, 0-20mA 4-20mA and/or TC/PT100	3 10-bit 0-10V, 0-20mA 4-20mA	3 10-bit 0-10V, 0-20mA 4-20mA & 2 14-bit 0-10V, 0-20mA 4-20mA and/or TC/PT100	9 3 10-bit, 0-10V 0-20mA, 4-20mA 6 14-bit 0-10V, 0-20mA 4-20mA	2 10-bit 0-10V, 0-20mA 4-20mA
Temperature Measurement	None	None	None	None	None	None	None	None
Digital Outputs (isolated)	4 npn/pnp (including 2 High-speed outputs)	4 npn/pnp (including 2 High-speed outputs)	2 npn/pnp High-speed	15 npn 2 npn/pnp (including 2 High-speed)	15 npn 2 npn/pnp (including 2 High-speed)	2 npn/pnp High-speed	2 (including 2 High-speed)	28 npn 2 npn/pnp High-speed
Relay Outputs (isolated)	10	10	15	None	None	15	15	None
Analog Outputs	None	2 12-bit 0-10V, 0-20mA 4-20mA	4 12-bit 0-10V, 4-20mA isolated	4 12-bit 0-10V, 4-20mA isolated	None	2 12-bit 0-10V, 4-20mA isolated	2 12-bit 0-10V, 4-20mA isolated	None

<sup>1</sup>V200-18-E46B, V200-18-E62B are not yet UL certified

## Additional COM Modules

Enhance Vision's communication capabilities<sup>1</sup>

Vision Model	Ethernet	RS232/RS485	Isolated RS232/RS485	CANbus	Profibus
SAMBA	V100-17-ET2	V100-17-RS4	V100-17-RS4X	V100-17-CAN	None
V130, V350, V430	V100-17-ET2 V100-S-ET2 <sup>2</sup>	V100-17-RS4	V100-17-RS4X	V100-17-CAN V100-S-CAN <sup>2</sup>	V100-17-PB1
V200, V500, V700, V1040, V1210	V200-19-ET2	V200-19-RS4	V200-19-RS4-X	None	V100-17-PB1 <sup>3</sup>

<b>GSM-KIT-41J</b>
Kit Including Enfora GSM1318 Q. Band Modem
<b>GSM-KIT-16J</b>
KIT, MODEM GPRS, CINTERION, BGS2T
<b>GSM-KIT-17J-3G</b>
KIT, MODEM GPRS, CINTERION, EHS6T

## DIN-rail Power Supplies

UAP-24V24W	UAP-24V60W	UAP-24V96W
24W 24V 1A	60W 24V 2.5A	96W 24V 4A



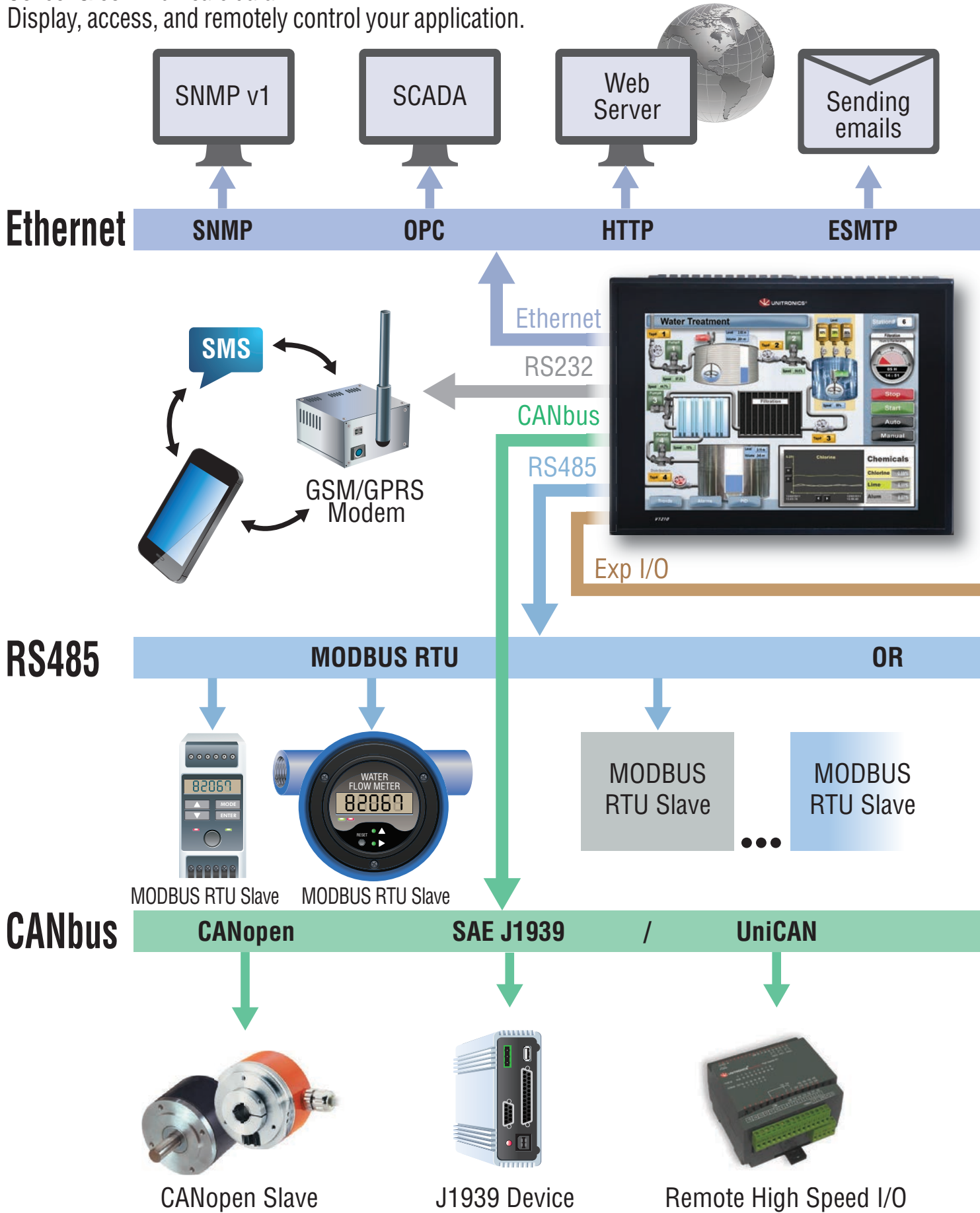
<sup>1</sup> V200/V500/V1040/V1210: 1 optional port for serial or Ethernet  
V130/V350: 1 optional port for serial or Ethernet & 1 optional port for CANbus/Profibus

<sup>2</sup> Extended temperature cards, operational temperature : -30°C to 60°C

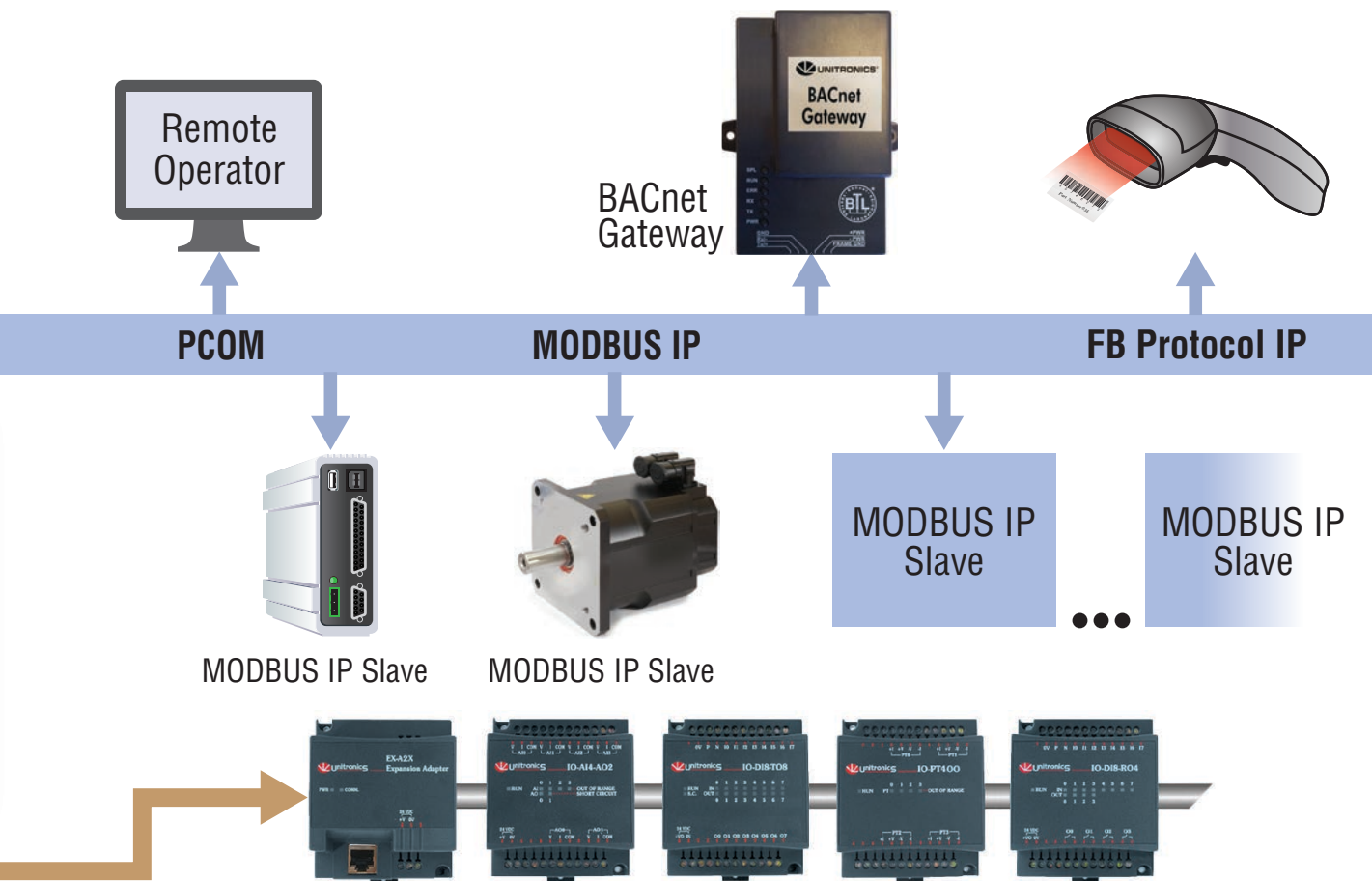
<sup>3</sup> Only for V700

# Configure your Network

Collect & communicate data.  
Display, access, and remotely control your application.



This image is for illustrative purposes only. Features and capabilities vary according to model.



MODBUS IP Slave

MODBUS IP Slave

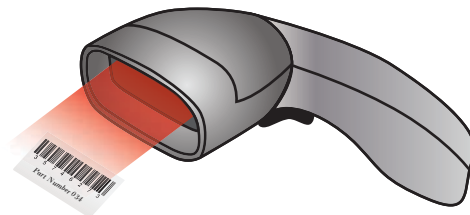
MODBUS IP Slave

MODBUS IP Slave

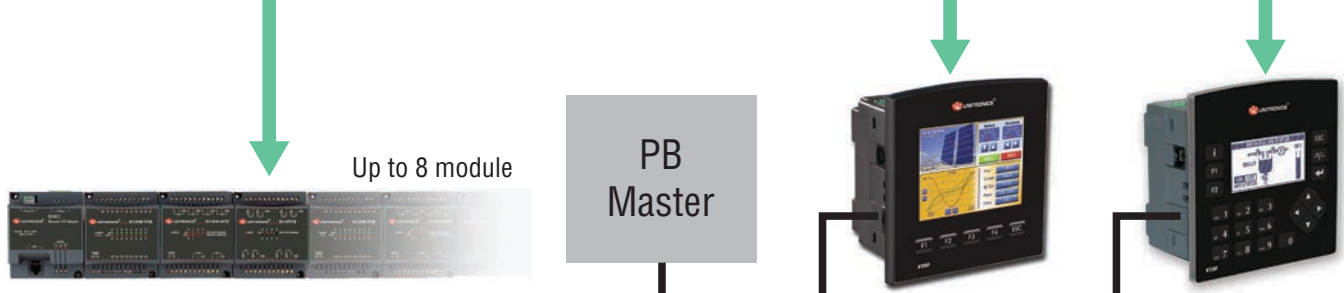


Expansion I/O's

**FB Protocol**



**UniCAN**



Remote I/O

ProfiBus

PB Slave

